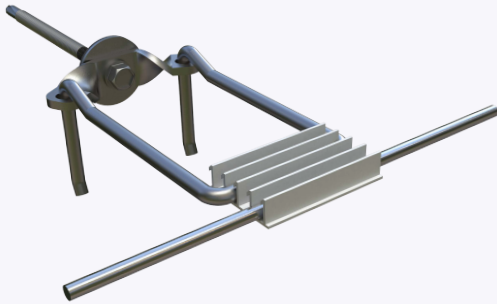


PRODUCT SUBMITTAL - THERM-A-BREAKTM Wing Anchor

Plastic



Material Conformance:

THERM-A-BREAKTM Wing Anchor - A cutting-edge single-screw veneer tie designed for metal stud. Capable of withstanding 100LB working load in tension and compression at .05" deflection.

Single Diameter Barrel: Type 304 stainless steel all-thread barrel with a polymer coating enhances corrosion protection. The 304 Stainless Steel and unique thread design optimizes thermal performance.

Wing: Premium Type 304 stainless steel wing, also with a polymer coating, accommodates stainless steel or hot-dip galvanized hooks.

Thermal Break: Includes a thermal break between the threaded barrel and the wing connection point, making it the first masonry anchor in the market to offer this feature while maintaining a full metal design. Unlike other anchors with plastic wings, sleeves or coatings, all stainless steel design will not melt or deform under NFPA 251: Standard Methods of Fire Resistance of Building Construction and Materials.

Washer: Dual sealing oversized washer seals the treads of the screw and seals and secures the insulation to the backup wall thus greatly reducing or eliminating insulation fasteners.

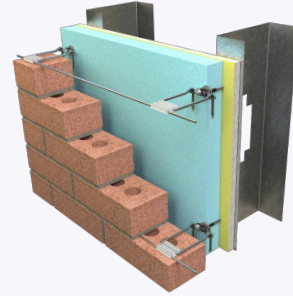
Recommended Spacing is 16" O.C.

Meets TMS 402/602 & ACI / ASCE 530 Building Code Requirements and Specification for Masonry Structures

Wire: (Carbon Steel) ASTM A1064 / A1064M
Tensile Strength: 80,000 psi. - Yield Point 70,000 psi.

Hot dip galvanized after fabrication.
ASTM A153 / ASTM A153-B2 (1.5 oz/ft)

Type 304 Stainless Steel ASTM A580/A580M Type 304



Recycled Content:

Stainless Steel Type 304

68% Post-Consumer

18% Pre-Consumer

Structural Performance:

Capable of withstanding 100 lbs load in tension and compression without deforming or developing play in excess of .05 inch. (Test results available upon request)

Sizes/Finishes:

Wing Finish: 304 Stainless Steel with 500/HR Salt Spray Test

Screw Finish: 304 Stainless Steel with 500/HR Salt Spray Test

Insulation / Gyp Board Thickness:

5/8" - 1 1/2"

2" - 3 1/2"

4" - 5 1/2"

Hook (Pintle): Diameter: 3/16"

Hook (Pintle):

Hot dip galvanized

Stainless Steel Type 304

Hook (Pintle): Length:

3" 4" 5" 6" 7"

Seismic Wire Hot Dip Galvanized: 9GA 3/16"

NOTE

The information contained on this submittal sheet does not constitute any professional opinion or judgement and should not be used as a substitute for any architect or engineer professional determinations. Each construction project is unique and the use of these products is the responsibility of the architects, engineers and other professionals who are familiar with the specific design of the project.

Mailing Address

8528 Davis Blvd., #134-246 North
Richland Hills, TX 76182 Tel#:
1-800-556-5785

3genmp.com

Warehouse Address

8550 Parkway Drive Leeds,
AL 35094 Tel#:
1-800-556-5785