

PRODUCT SUBMITTAL - THERM-A-BREAKTM Wing Anchor



Material Conformance:

THERM-A-BREAKTM Wing Anchor – A high-performance single-screw veneer tie designed for metal stud backup walls. Capable of withstanding a 100 lb working load in both tension and compression at 0.05 in. deflection. **Single-Diameter Barrel / Screw:** Type 304 stainless steel all-thread barrel featuring a thermal-break coating that reduces thermal conductivity and enhances overall thermal performance. In addition, a 500-hour polymer coating is applied to further enhance corrosion resistance in aggressive or high-moisture environments. The 304 stainless steel substrate and proprietary thread design optimize structural performance while improving long-term durability.

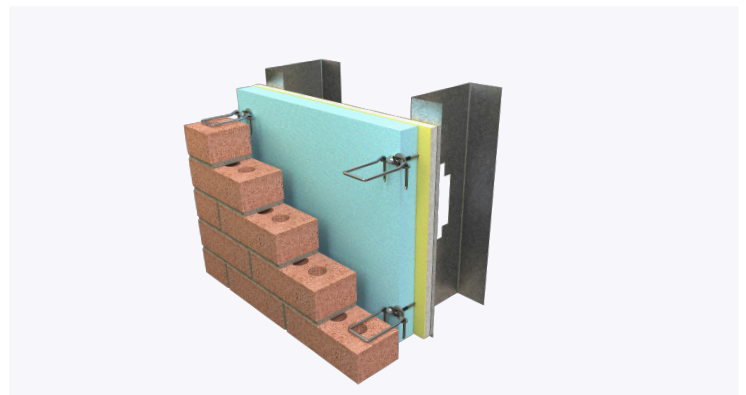
Wing: Premium Type 304 stainless steel wing designed to accommodate stainless steel or hot-dip galvanized veneer ties and hooks. The wing is protected with a 500-hour corrosion-resistant polymer coating to enhance durability and service life in exterior wall assemblies and harsh environmental conditions. The all-metal wing provides long-term dimensional stability and full compatibility with common masonry reinforcement accessories.

Thermal Break: Includes an integrated thermal break between the threaded barrel and the wing connection point, making it the first masonry anchor on the market to offer this feature while maintaining a continuous full-metal load path.

Unlike anchors that rely on plastic wings, plastic sleeves, plastic bushings, or plastic spacers to achieve a thermal break, the THERM-A-BREAKTM design avoids the long-term performance and safety risks associated with polymer structural components. Plastics are susceptible to creep under sustained load, embrittlement over time, and loss of strength at elevated temperatures. They are also vulnerable to UV exposure, chemical attack, and thermal cycling, all of which can degrade mechanical properties and dimensional stability over the life of the wall system.

In fire conditions, plastic components can soften, melt, or burn away, compromising the anchor's ability to maintain veneer support and load transfer. By contrast, the THERM-A-BREAKTM Wing Anchor maintains an all-stainless-steel structural design that will not melt, soften, or deform when tested in accordance with NFPA 251: Standard Methods of Fire Resistance of Building Construction and Materials. This ensures predictable structural performance, fire safety, and long-term reliability while still delivering meaningful thermal-bridging reduction through the coated thermal-break interface.

Washer: Dual-sealing oversized washer seals the threads of the screw and secures the insulation to the backup wall, significantly reducing or eliminating the need for separate insulation fasteners.



Recycled Content:

Stainless Steel Type 304

68% Post-Consumer

18% Pre-Consumer

Structural Performance:

Capable of withstanding 100 lbs load in tension and compression without deforming or developing play in excess of .05 inch. (Test results available upon request)

Sizes/Finishes:

Wing Finish: 304 Stainless Steel with 500/HR Salt Spray Test

Screw Finish: 304 Stainless Steel with 500/HR Salt Spray Test

Insulation / Gyp Board Thickness:

5/8" - 1 1/2"

2" - 3 1/2"

4" - 5 1/2"

Hook (Pintle): Diameter: 3/16"

Hook (Pintle):

Hot dip galvanized

Stainless Steel Type 304

Hook (Pintle): Length:

3"

4"

5"

6"

7"

In order to email your submittal sheet information, you must have Adobe Acrobat installed on your computer.

NOTE

The information contained on this submittal sheet does not constitute any professional opinion or judgement and should not be used as a substitute for any architect or engineer professional determinations. Each construction project is unique and the use of these products is the responsibility of the architects, engineers and other professionals who are familiar with the specific design of the project.

Mailing Address

8528 Davis Blvd., #134-246 North
Richland Hills, TX 76182 Tel#:
1-800-556-5785

3genmp.com

Warehouse Address

8550 Parkway Drive Leeds,
AL 35094 Tel#:
1-800-556-5785