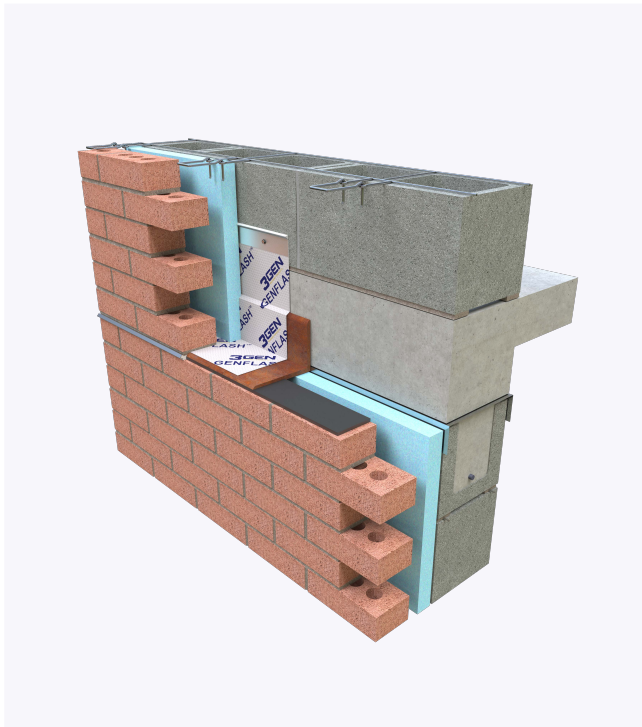
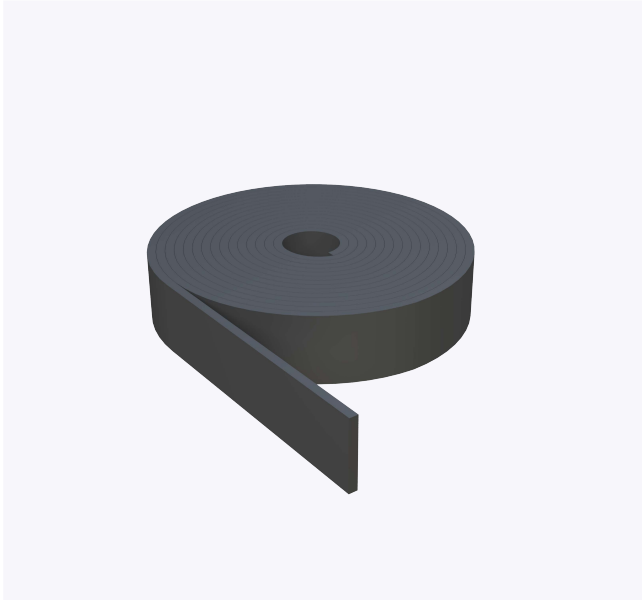


PRODUCT SUBMITTAL - NEOPRENE EXPANSION JOINT



Material Conformance:

Closed-cell Neoprene is durable and water-resistant. It can handle up to 50% compression, and is manufactured to meet ASTM D 1056, RE41 Grade 2A1.

Physical Properties:

Density
Compression Set
Tensile Strength
Elongation at Break
Temperature Range
Water Absorption
Shore Hardness
Thermal Conductivity
Chemical Resistance

Typical Value:

3 to 10 pounds per cubic foot (PCF)
Up to 50% compression recovery
Greater than 150 psi
100% to 400%
-40°F to 200°F (-40°C to 93°C)
Less than 5% by weight
20-30 Shore A
Low (Good insulation properties)
Resistant to oils, chemicals, and ozone

Neoprene Expansion Joint:

3/8" X 3" X 50 FT Long

In order to email your submittal sheet information, you must have Adobe Acrobat installed on your computer.

NOTE

The information provided herein is for general informational purposes only and does not constitute a professional opinion or engineering judgment. It is not intended to replace the design, detailing, or project-specific determinations of the licensed architect or engineer of record.

Each project is unique. The selection, application, suitability, and proper installation of these products are the sole responsibility of the design professional and installer based on project-specific conditions, substrate, exposure, and applicable codes. All products and information referenced herein are subject to 3GEN Masonry Products, Inc.'s Terms and Conditions of Sale, including all limitations of liability, disclaimers of warranties, and exclusive remedies, as published and in effect at the time of sale.

Mailing Address

8528 Davis Blvd., #134-246 North
Richland Hills, TX 76182 Tel#:
1-800-556-5785

3genmp.com

Warehouse Address

8550 Parkway Drive Leeds,
AL 35094 Tel#:
1-800-556-5785