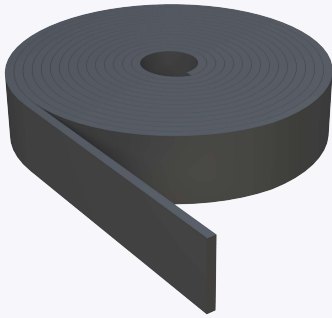


PRODUCT SUBMITTAL - NEOPRENE EXPANSION JOINT



Material Conformance:

Closed-cell Neoprene is durable and water-resistant. It can handle up to 50% compression, and is manufactured to meet ASTM D 1056, RE41 Grade 2A1.

Physical Properties:

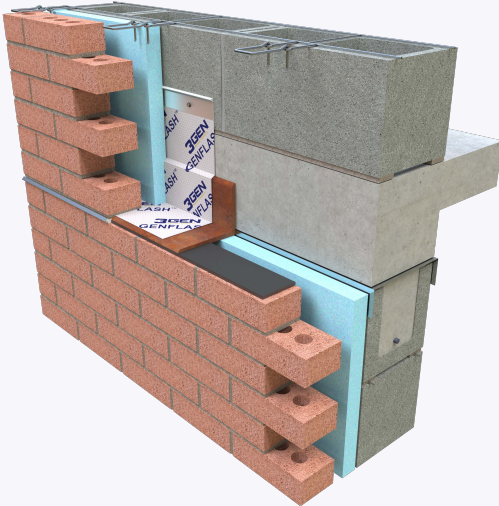
Density
Compression Set
Tensile Strength
Elongation at Break
Temperature Range
Water Absorption
Shore Hardness
Thermal Conductivity
Chemical Resistance

Typical Value:

3 to 10 pounds per cubic foot (PCF)
Up to 50% compression recovery
Greater than 150 psi
100% to 400%
-40°F to 200°F (-40°C to 93°C)
Less than 5% by weight
20-30 Shore A
Low (Good insulation properties)
Resistant to oils, chemicals, and ozone

Neoprene Expansion Joint:

3/8" X 3" X 50 FT Long



NOTE

The information contained on this submittal sheet does not constitute any professional opinion or judgement and should not be used as a substitute for any architect or engineer professional determinations. Each construction project is unique and the use of these products is the responsibility of the architects, engineers and other professionals who are familiar with the specific design of the project.

Mailing Address

8528 Davis Blvd., #134-246 North
Richland Hills, TX 76182 Tel#:
1-800-556-5785

3genmp.com

Warehouse Address

8550 Parkway Drive Leeds,
AL 35094 Tel#:
1-800-556-5785