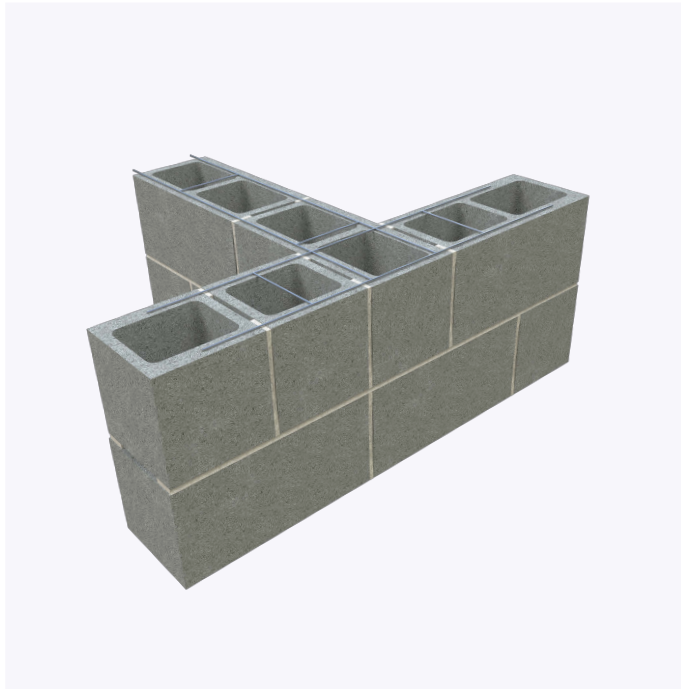
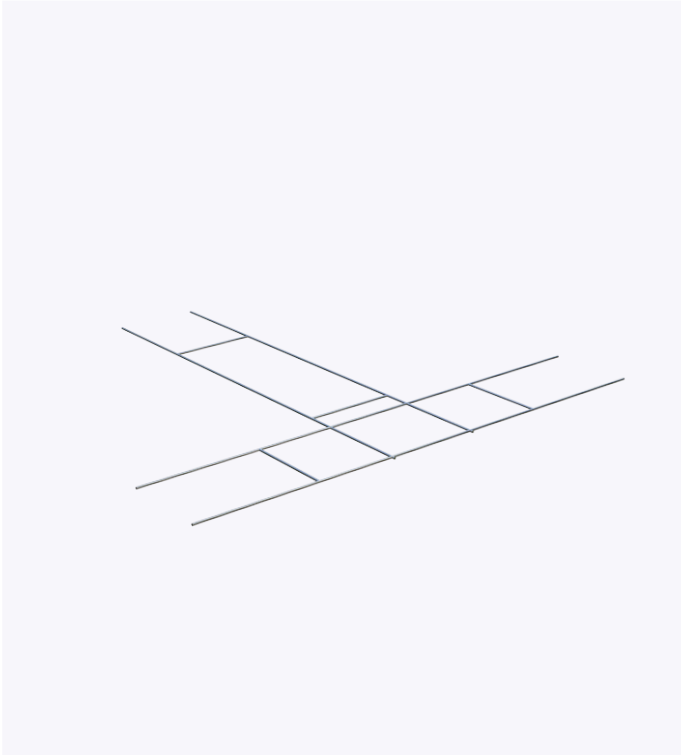


# PRODUCT SUBMITTAL - LADDER TEE

Ladder Joint reinforcing is designed for embedment in the horizontal mortar joints of concrete masonry units.



## Recycled Content:

85% Post-Consumer 10% Post-Industrial

## Material Conformance:

Ladder Joint reinforcing is designed for embedment in the horizontal mortar joints of concrete masonry units.

ASTM A951/A951M (Standard Specification for Steel Wire for Masonry Joint Reinforcing.

Meets TMS 402/602 & ACI / ASCE 530 Building Code Requirements and Specification for Masonry Structures

Wire: (Carbon Steel) ASTM A1064 / A1064M

Tensile Strength: 80,000 psi. - Yield Point 70,000 psi.

Mill Galvanized ASTM A641 / ASTM A641M (0.1 oz/ft)

Hot Dip Galvanized after fabrication.

ASTM A153 / ASTM A153-B2 (1.5 oz/ft)

## Product Details:

Cross rods welded 16" o.c.

Wire deformations meet ASTM A951

## Finishes:

Mill Galvanized

Hot Dip Galvanized

304 stainless steel

## Wire Diameter:

Standard

Heavy Duty

Extra Heavy Duty

## Side Rods

9 Gauge (.148"

3/16" (.187")

3/16" (.187")

## Cross Rods

9 Gauge (.148"

9 Gauge (.148")

33/16" (.187")

## CMU / Block Size:

4"

6"

8"

10"

12"

In order to email your submittal sheet information, you must have Adobe Acrobat installed on your computer.

## NOTE

The information contained on this submittal sheet does not constitute any professional opinion or judgement and should not be used as a substitute for any architect or engineer professional determinations. Each construction project is unique and the use of these products is the responsibility of the architects, engineers and other professionals who are familiar with the specific design of the project.

## Mailing Address

8528 Davis Blvd., #134-246 North  
Richland Hills, TX 76182 Tel#:  
1-800-556-5785

**3genmp.com**

## Warehouse Address

8550 Parkway Drive Leeds,  
AL 35094 Tel#:  
1-800-556-5785