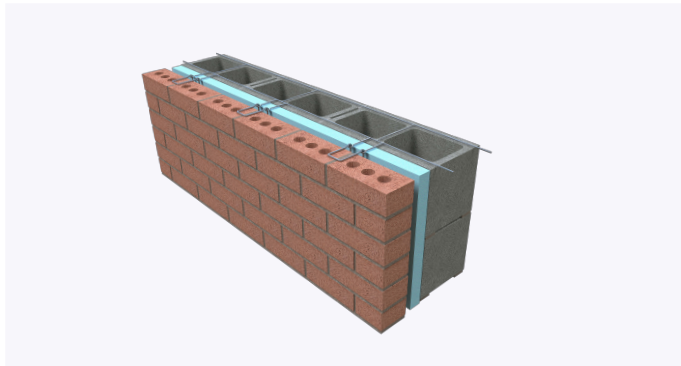
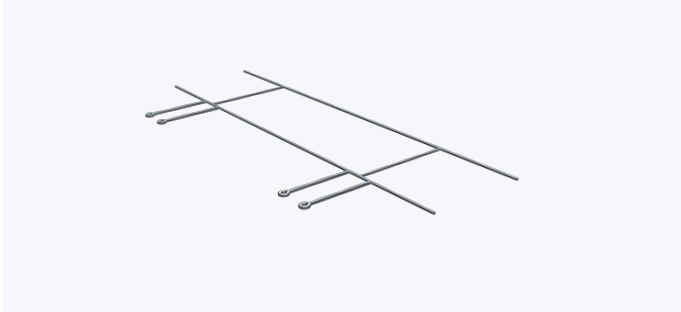


PRODUCT SUBMITTAL - LADDER EYE

Ladder Eye Joint reinforcing is designed for embedment in the horizontal mortar joints of concrete masonry units



Product Details:

Ladder Eye Wire is manufactured in 10-foot-long pieces with cross rods welded at 16 inches on center, starting 12 inches from the end to ensure proper overlap, as required by TMS 602 Specification 3.4 B.11(b), which requires a minimum 8-inch lap splice for joint reinforcement.

Wire deformations meet ASTM A951

Structural Performance:

Capable of withstanding 100 lbs load in tension and compression without deforming or developing play in excess of .05 inch. (Test results available upon request)

Eye wire weld height will not exceed half the dimension of the mortar joint (3/8" joint = 3/16" max reinforcement). This meets TMS 402/602 Building Code Requirements and Specification for Masonry Structures.

Finish:

Hot Dip Galvanized 304 stainless steel

Wire Diameter:	Side Rods	Cross Rods
Standard	9 Gauge (.148")	9 Gauge (.148")
Heavy Duty	3/16" (.187")	9 Gauge (.148")
Extra Heavy Duty	3/16" (.187")	33/16" (.187")

CMU / Block Size:

4" 6" 8" 10" 12"

Insulation Thickness:

0" 1" 1 1/2" 2" 2 1/2" 3" 3 1/2" 4"

3/16" Diameter Hook (Pintle) Length:

3" 4" 5" 6" 7"

In order to email your submittal sheet information, you must have Adobe Acrobat installed on your computer.

NOTE

The information provided herein is for general informational purposes only and does not constitute a professional opinion or engineering judgment. It is not intended to replace the design, detailing, or project-specific determinations of the licensed architect or engineer of record. Each project is unique. The selection, application, suitability, and proper installation of these products are the sole responsibility of the design professional and installer based on project-specific conditions, substrate, exposure, and applicable codes. All products and information referenced herein are subject to 3GEN Masonry Products, Inc.'s Terms and Conditions of Sale, including all limitations of liability, disclaimers of warranties, and exclusive remedies, as published and in effect at the time of sale.

Recycled Content:

85% Post-Consumer 10% Post-Industrial

Material Conformance:

Ladder Eye Joint reinforcing is designed for embedment in the horizontal mortar joints of concrete masonry units.

ASTM A951/A951M (Standard Specification for Steel Wire for Masonry Joint Reinforcing.)

Meets TMS 402/602 & ACI / ASCE 530 Building Code Requirements and Specification for Masonry Structures

Wire: (Carbon Steel) ASTM A1064 / A1064M

Tensile Strength: 80,000 psi. - Yield Point 70,000 psi.

Mill Galvanized ASTM A641 / ASTM A641M (0.1 oz/ft)

Hot Dip Galvanized after fabrication.

ASTM A153 / ASTM A153-B2 (1.5 oz/ft)

Mailing Address

8528 Davis Blvd., #134-246 North
Richland Hills, TX 76182 Tel#:
1-800-556-5785

3genmp.com

Warehouse Address

8550 Parkway Drive Leeds,
AL 35094 Tel#:
1-800-556-5785