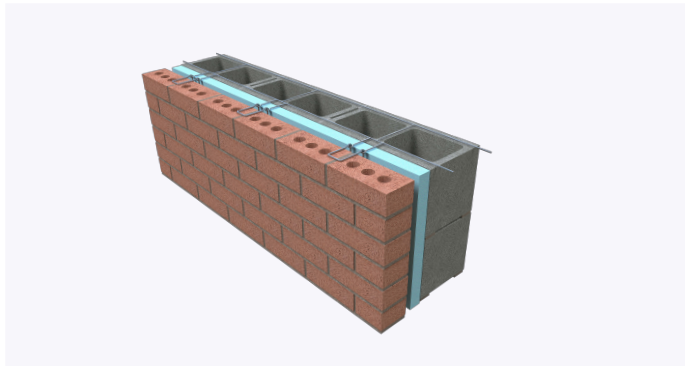
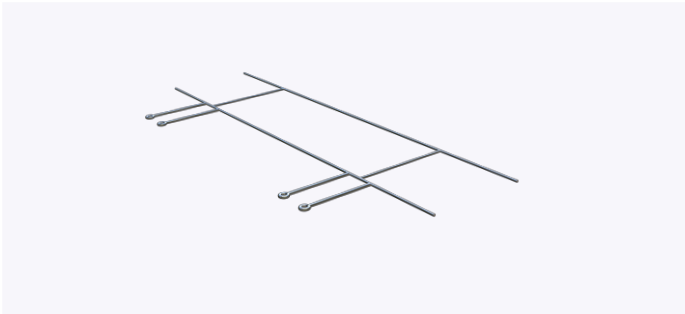


# PRODUCT SUBMITTAL - LADDER EYE

Ladder Eye Joint reinforcing is designed for embedment in the horizontal mortar joints of concrete masonry units



### Product Details:

Ladder Eye Wire is manufactured in 10-foot-long pieces with cross rods welded at 16 inches on center, starting 12 inches from the end to ensure proper overlap, as required by TMS 602 Specification 3.4 B.11(b), which requires a minimum 8-inch lap splice for joint reinforcement.

Wire deformations meet ASTM A951

### Structural Performance:

Capable of withstanding 100 lbs load in tension and compression without deforming or developing play in excess of .05 inch. (Test results available upon request)

Eye wire weld height will not exceed half the dimension of the mortar joint (3/8" joint = 3/16" max reinforcement). This meets TMS 402/602 Building Code Requirements and Specification for Masonry Structures.

### Finish:

Hot Dip Galvanized      304 stainless steel

| Wire Diameter:   | Side Rods       | Cross Rods      |
|------------------|-----------------|-----------------|
| Standard         | 9 Gauge (.148") | 9 Gauge (.148") |
| Heavy Duty       | 3/16" (.187")   | 9 Gauge (.148") |
| Extra Heavy Duty | 3/16" (.187")   | 33/16" (.187")  |

### CMU / Block Size:

4"    6"    8"    10"    12"

### Insulation Thickness:

0"    1"    1 1/2"    2"    2 1/2"    3"    3 1/2"    4"

### 3/16" Diameter Hook (Pintle) Length:

3"    4"    5"    6"    7"

### Recycled Content:

85% Post-Consumer 10% Post-Industrial

### Material Conformance:

Ladder Eye Joint reinforcing is designed for embedment in the horizontal mortar joints of concrete masonry units.

ASTM A951/A951M (Standard Specification for Steel Wire for Masonry Joint Reinforcing.)

Meets TMS 402/602 & ACI / ASCE 530 Building Code Requirements and Specification for Masonry Structures

Wire: (Carbon Steel) ASTM A1064 / A1064M

Tensile Strength: 80,000 psi. - Yield Point 70,000 psi.

Mill Galvanized ASTM A641 / ASTM A641M (0.1 oz/ft)

Hot Dip Galvanized after fabrication.

ASTM A153 / ASTM A153-B2 (1.5 oz/ft)

### NOTE

The information contained on this submittal sheet does not constitute any professional opinion or judgement and should not be used as a substitute for any architect or engineer professional determinations. Each construction project is unique and the use of these products is the responsibility of the architects, engineers and other professionals who are familiar with the specific design of the project.

### Mailing Address

8528 Davis Blvd., #134-246 North  
Richland Hills, TX 76182 Tel#:  
1-800-556-5785

3genmp.com

### Warehouse Address

8550 Parkway Drive Leeds,  
AL 35094 Tel#:  
1-800-556-5785