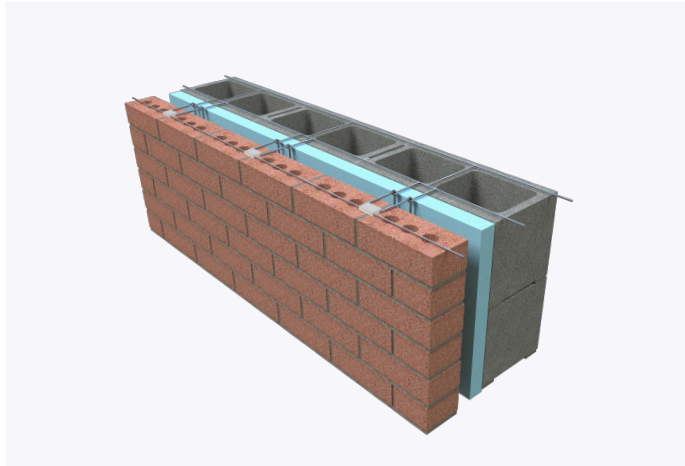
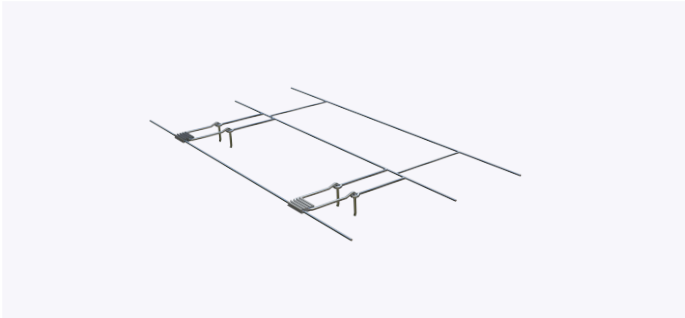


# PRODUCT SUBMITTAL - Ladder Eye Seismic Plastic Clip

Ladder Eye Seismic Plastic Clip is designed for embedment in the horizontal mortar joints of concrete masonry units.



## Material Conformance:

Ladder Eye Seismic Plastic Clip is designed for embedment in the horizontal mortar joints of concrete masonry unit.

ASTM A951/A951M (Standard Specification for Steel Wire for Masonry Joint Reinforcing.

Meets TMS 402/602 & ACI / ASCE 530 Building Code Requirements and Specification for Masonry Structures

Wire: (Carbon Steel) ASTM A1064 / A1064M

Tensile Strength: 80,000 psi. - Yield Point 70,000 psi.

Hot Dip Galvanized after fabrication.

ASTM A153 / ASTM A153-B2 (1.5 oz/ft)

## Recycled Content:

85% Post-Consumer

10% Post-Industrial

## Product Details:

Capable of withstanding 100 lbs load in tension and compression without deforming or developing play in excess of .05 inch. (Test results available upon request)

## Sizes/Finishes:

Finishes:

Hot Dip Galvanized

Wire Size:

Standard

Heavy Duty

Extra Heavy Duty

Side Rods

9 Gauge (.148")

3/16" (.187")

3/16" (.187")

Cross Rods

9 Gauge (.148")

9 Gauge (.148")

33/16" (.187")

CMU / Block Size Hook Finish: Hot Dip Galvanized

4"

6"

8"

10"

12"

Insulation Thickness:

2"

2 1/2"

3"

3 1/2"

4"

Hook Length:

3"

4"

5"

6"

7"

Seismic Plastic Clip

Seismic Wire Hot Dip Galvanized:

9 GA.

3/16"

In order to email your submittal sheet information, you must have Adobe Acrobat installed on your computer.

## NOTE

The information contained on this submittal sheet does not constitute any professional opinion or judgement and should not be used as a substitute for any architect or engineer professional determinations. Each construction project is unique and the use of these products is the responsibility of the architects, engineers and other professionals who are familiar with the specific design of the project.

## Mailing Address

8528 Davis Blvd., #134-246 North  
Richland Hills, TX 76182 Tel#:  
1-800-556-5785

**3genmp.com**

## Warehouse Address

8550 Parkway Drive Leeds,  
AL 35094 Tel#:  
1-800-556-5785