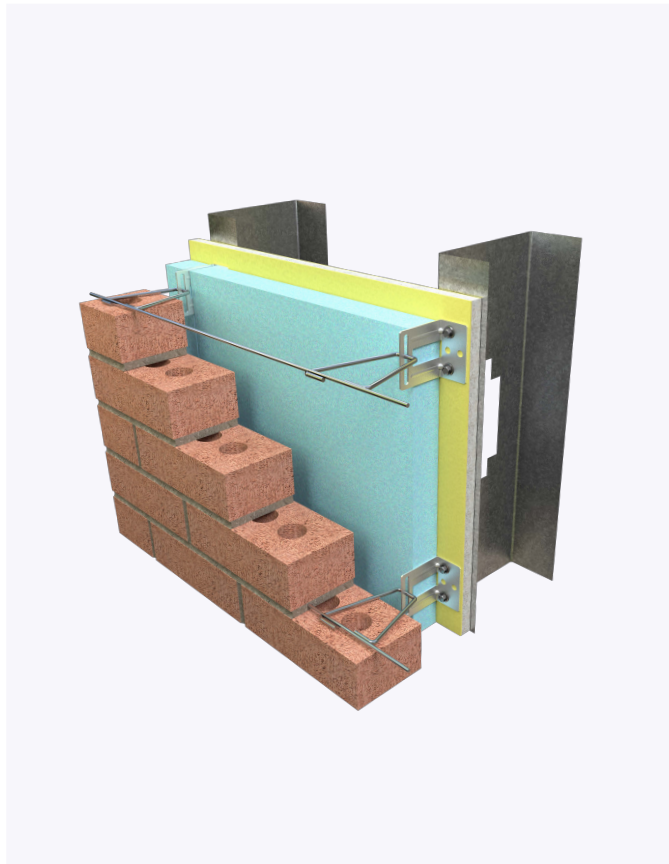
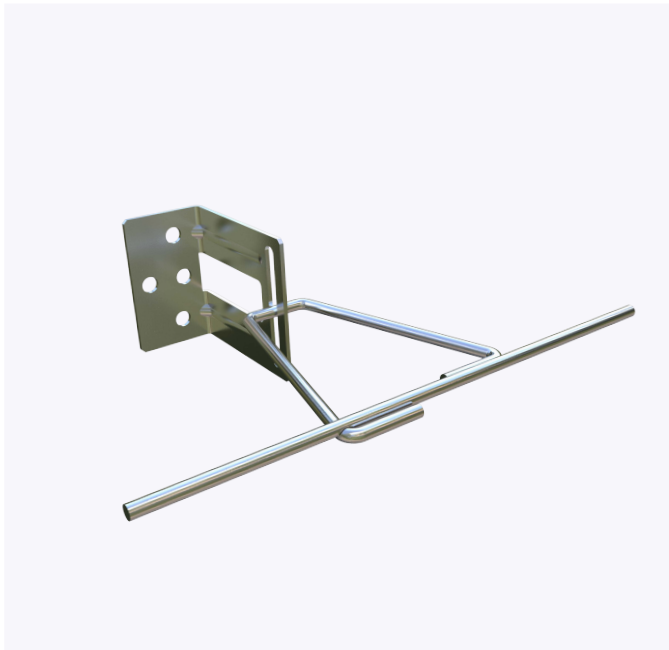


PRODUCT SUBMITTAL - H-13-V Seismic Triangle

The H-13-V Seismic Triangle is used for anchoring brick to metal stud, wood stud, concrete block or poured concrete.



Recycled Content:

85% Post-Consumer
10% Post-Industrial

Material Conformance:

The H-13-V Seismic Triangle's multifunctional design allows for horizontal installation with a hook or vertical installation with a triangle.

The H-13-V Seismic Triangle is used for anchoring brick to metal stud, wood stud, concrete block or poured concrete.

H-13-V Seismic Triangle can be used with rigid or spray foam insulation.
Recommended Spacing is 16" O.C.

Meets TMS 402/602 & ACI / ASCE 530 Building Code
Requirements and Specification for Masonry Structures

Sheet Metal: ASTM A1008 / A1008M

Wire: (Carbon Steel) ASTM A1064 / A1064M

Tensile Strength: 80,000 psi. - Yield Point 70,000 psi.

Hot dip galvanized after fabrication.

ASTM A153 / ASTM A153-B2 (1.5 oz/ft)

Structural Performance:

Capable of withstanding 100 lbs load in tension and compression without deforming or developing play in excess of .05 inch. (Test results available upon request)

Sizes/Finishes:

H-13 Finish: Hot Dip Galvanized 304 Stainless Steel

H-13 Material Thickness: 14 Gauge

Hook Diameter: 3/16"

Hook Finish: Hot Dip Galvanized 304 Stainless Steel

Insulation Thickness:

0"	1"	1 1/2"	2"	2 1/2"
----	----	--------	----	--------

3"	3 1/2"	4"	4 1/2"	
----	--------	----	--------	--

Hook (Pintle) Length:

3"	4"	5"	6"	7"
----	----	----	----	----

Seismic Plastic Clip

Seismic Wire Hot Dip Galvanized:	9 GA.	3/16"
----------------------------------	-------	-------

In order to email your submittal sheet information, you must have Adobe Acrobat installed on your computer.

NOTE

The information provided herein is for general informational purposes only and does not constitute a professional opinion or engineering judgment. It is not intended to replace the design, detailing, or project-specific determinations of the licensed architect or engineer of record.

Each project is unique. The selection, application, suitability, and proper installation of these products are the sole responsibility of the design professional and installer based on project-specific conditions, substrate, exposure, and applicable codes.

All products and information referenced herein are subject to 3GEN Masonry Products, Inc.'s Terms and Conditions of Sale, including all limitations of liability, disclaimers of warranties, and exclusive remedies, as published and in effect at the time of sale.

Mailing Address

8528 Davis Blvd., #134-246 North
Richland Hills, TX 76182 Tel#:
1-800-556-5785

3genmp.com

Warehouse Address

8550 Parkway Drive Leeds,
AL 35094 Tel#:
1-800-556-5785