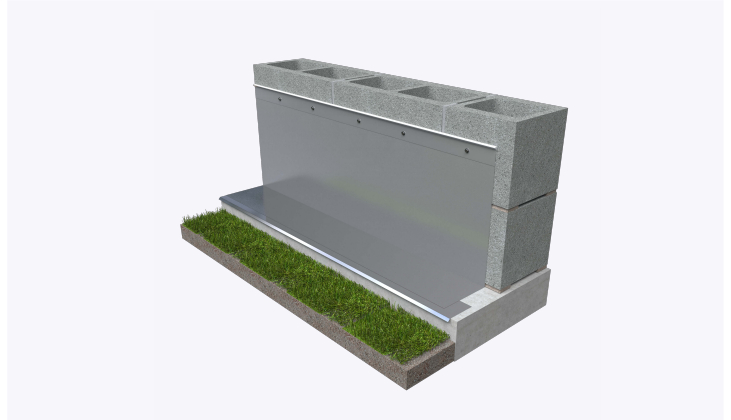
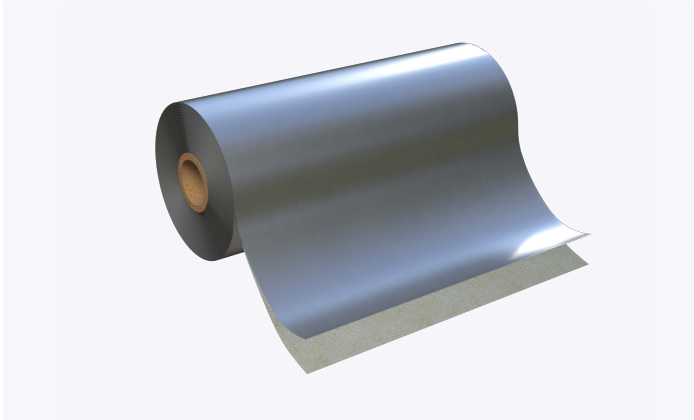


PRODUCT SUBMITTAL - GENFLASH® SS SA



Recycled Content:

Stainless Steel (Type 304)

60% Post-Consumer

Material Conformance:

GENFLASH® SS SA is engineered with a pliable 2 mil sheet of Type 304 stainless steel, accompanied by 10 mils of butyl adhesive with release liner. Serving as a self-adhering metal membrane, GENFLASH® SS SA stands out for its exceptional puncture and tear resistance.

Bare stainless steel surface for sealant adhesion

Butyl adhesive/watertight bond

No primer required

UV resistant

High puncture resistance

Mold resistant: passes ASTM D3273

Fire resistant: passes ASTM E84, Class A

Life of the wall warranty

Passes AAMA 711-20

Passes air barrier material test: ASTM E2178-13

Compatible with: Insulation, Spray Polyurethane Foam, Air barriers and most sealants

Thickness 2 mils stainless steel, 10 mils of adhesive

Stainless Steel: Type 304 ASTM A240 / A240M, ASTM A480 / A480M & ASTM A666.

Sizes/Finishes:

GENFLASH® 304 SS SA (50 ft Long Rolls)

Widths: 12" 18" 24" 36"

Termination Bar Finish:
AL
304 SS

Termination Bar Type:
Type F
Type L

*****GENFLASH® 304 SS SA requires the use of Termination Bars****

Drip Edge Type 304 SS Width:

1 1/2" 3"

Drip Edge Type 304 SS
Corners:

3" Outside Corner
3" Inside Corner

GENFLASH® Type 304
SS Corners & End Dams:
Outside Corner
Inside Corner
End Dam

In order to email your submittal sheet information, you must have Adobe Acrobat installed on your computer

NOTE

The information provided herein is for general informational purposes only and does not constitute a professional opinion or engineering judgment. It is not intended to replace the design, detailing, or project-specific determinations of the licensed architect or engineer of record.

Each project is unique. The selection, application, suitability, and proper installation of these products are the sole responsibility of the design professional and installer based on project-specific conditions, substrate, exposure, and applicable codes.

All products and information referenced herein are subject to 3GEN Masonry Products, Inc.'s Terms and Conditions of Sale, including all limitations of liability, disclaimers of warranties, and exclusive remedies, as published and in effect at the time of sale.

Mailing Address

8528 Davis Blvd., #134-246 North
Richland Hills, TX 76182 Tel#:
1-800-556-5785

3genmp.com

Warehouse Address

8550 Parkway Drive Leeds,
AL 35094 Tel#:
1-800-556-5785