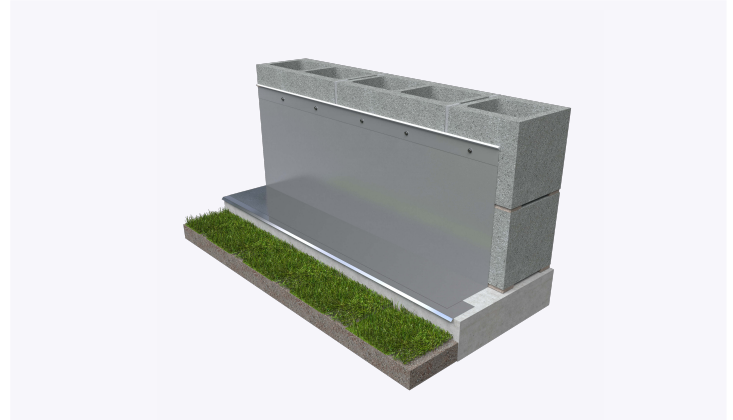
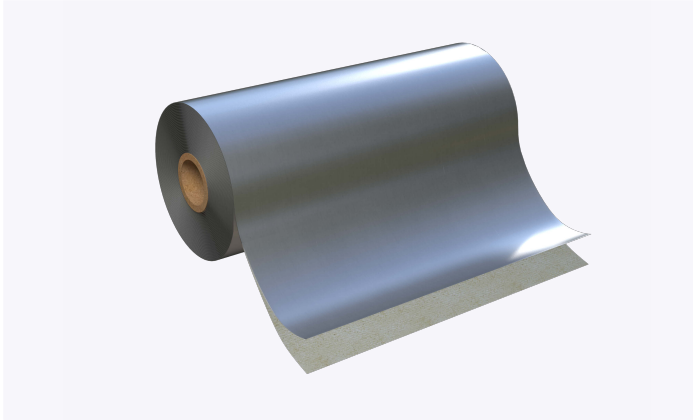


# PRODUCT SUBMITTAL - GENFLASH® SS SA



## Recycled Content:

Stainless Steel (Type 304)

60% Post-Consumer

## Material Conformance:

GENFLASH® SS SA is engineered with a pliable 2 mil sheet of Type 304 stainless steel, accompanied by 10 mils of butyl adhesive with release liner. Serving as a self-adhering metal membrane, GENFLASH® SS SA stands out for its exceptional puncture and tear resistance.

Bare stainless steel surface for sealant adhesion

Butyl adhesive/watertight bond

No primer required

UV resistant

High puncture resistance

Mold resistant: passes ASTM D3273

Fire resistant: passes ASTM E84, Class A

Life of the wall warranty

Passes AAMA 711-20

Passes air barrier material test: ASTM E2178-13

Compatible with: Insulation, Spray Polyurethane Foam, Air barriers and most sealants

Thickness 2 mils stainless steel, 10 mils of adhesive

Stainless Steel: Type 304 ASTM A240 / A240M, ASTM A480 / A480M & ASTM A666.

## Sizes/Finishes:

GENFLASH® 304 SS SA (50 ft Long Rolls)

Widths: 12" 18" 24" 36"

Termination Bar Finish:

AL  
304 SS

Termination Bar Type:

Type F  
Type L

**\*\*\*GENFLASH® 304 SS SA requires the use of Termination Bars\*\***

Drip Edge Type 304 SS Width:

1 1/2" 3"

Drip Edge Type 304 SS

Corners:

3" Outside Corner  
3" Inside Corner

GENFLASH® Type 304  
SS Corners & End Dams:

Outside Corner  
Inside Corner  
End Dam

In order to email your submittal sheet information, you must have Adobe Acrobat installed on your computer

## NOTE

All information, data, and recommendations on this submittal are provided for general informational purposes only and do not constitute any warranty, guarantee, representation, or professional opinion. No reliance shall be placed on this information. Product selection, suitability, design, installation, and code compliance are the sole responsibility of the architect, engineer, design professional, and contractor. All Products are provided subject to 3GEN Masonry Products, Inc. Terms and Conditions of Sale, including all limitations, disclaimers, exclusive remedies, and indemnity obligations.

### Mailing Address

8528 Davis Blvd., #134-246 North  
Richland Hills, TX 76182 Tel#:  
1-800-556-5785

**3genmp.com**

### Warehouse Address

8550 Parkway Drive Leeds,  
AL 35094 Tel#:  
1-800-556-5785