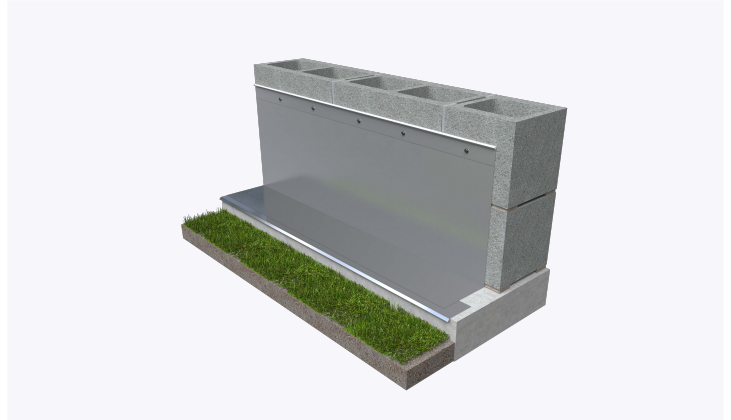
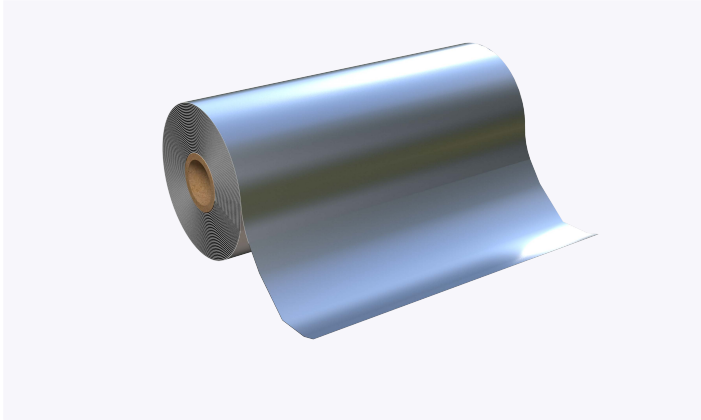


# PRODUCT SUBMITTAL - GENFLASH® SS



### Recycled Content:

Stainless Steel (Type 304)

60% Post-Consumer

### Material Conformance:

GENFLASH™ SS is a stainless steel fabric flashing, categorized as Class A material, comprising a layer of polymeric fabric bonded with a single sheet of 304 stainless steel on one side.

This innovative product boasts exceptional puncture and tear resistance, engineered for enduring performance throughout the wall's lifespan.

High puncture resistance

Mold resistant: passes ASTM D3273

Fire resistant: passes ASTM E84, Class A

Life of the wall warranty

Compatible with:

Insulation

Spray Polyurethane Foam

Air barriers

Construction sealants

Thickness 2 mils stainless steel, 10 mils overall thickness

Stainless Steel: Type 304 ASTM A240 / A240M,

ASTM A480 / A480M & ASTM A666.

### Sizes/Finishes:

GENFLASH® 304 SS (60 ft Long Rolls)

Widths: 12" 18" 24" 36"

Termination Bar Finish:

AL  
304 SS

Termination Bar Type:

Type F  
Type L

**\*\*GENFLASH® SS requires the use of Termination Bars\*\***

Drip Edge Type 304 SS Width:

1 1/2" 3"

Drip Edge Type 304 SS  
Corners:

3" Outside Corner  
3" Inside Corner

Type 304 SS Corners &  
End Dams:

Outside Corner  
Inside Corner  
End Dam

In order to email your submittal sheet information, you must have Adobe Acrobat installed on your computer

### NOTE

The information provided herein is for general informational purposes only and does not constitute a professional opinion or engineering judgment. It is not intended to replace the design, detailing, or project-specific determinations of the licensed architect or engineer of record. Each project is unique. The selection, application, suitability, and proper installation of these products are the sole responsibility of the design professional and installer based on project-specific conditions, substrate, exposure, and applicable codes. All products and information referenced herein are subject to 3GEN Masonry Products, Inc.'s Terms and Conditions of Sale, including all limitations of liability, disclaimers of warranties, and exclusive remedies, as published and in effect at the time of sale.

### Mailing Address

8528 Davis Blvd., #134-246 North  
Richland Hills, TX 76182 Tel#:  
1-800-556-5785

**3genmp.com**

### Warehouse Address

8550 Parkway Drive Leeds,  
AL 35094 Tel#:  
1-800-556-5785