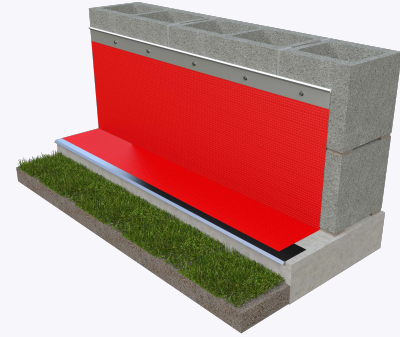
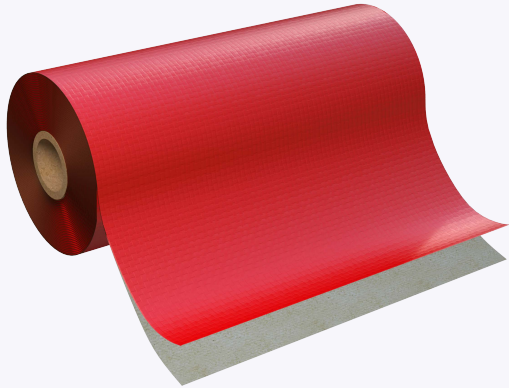


PRODUCT SUBMITTAL - GENFLASH® COPPER SA



Recycled Content:

90% Recycled Content

Material Conformance:

GENFLASH® COPPER SA is engineered with a flexible sheet of copper, available in 3 oz., 5 oz., or 7 oz. weights, laminated on one side with polymer fabric, butyl adhesive, and a siliconized release liner.

This innovative product boasts exceptional puncture and tear resistance, engineered for enduring performance throughout the wall's lifespan.

High puncture resistance

Mold resistant: passes ASTM D3273

Fire resistant: passes ASTM E84, Class A

Life of the wall warranty

Compatible with:

Insulation

Spray Polyurethane Foam,

Air barriers

Construction sealants

Sizes/Finishes:

GENFLASH® COPPER SA (25ft Long Rolls)

Widths: 12" 18" 24" 36"

Termination Bar Finish:

AL

304 SS

Termination Bar Type:

Type F

Type L

****GENFLASH® COPPER SA requires the use of a Termination Bar****

Drip Edge Type 304 SS Width:

3"

Drip Edge Type 304 SS

Corners:

3" Outside Corner

3" Inside Corner

GENFLASH® Type 304

SS Corners & End Dams:

Outside Corner

Inside Corner

End Dam

In order to email your submittal sheet information, you must have Adobe Acrobat installed on your computer.

NOTE

The information contained on this submittal sheet does not constitute any professional opinion or judgement and should not be used as a substitute for any architect or engineer professional determinations. Each construction project is unique and the use of these products is the responsibility of the architects, engineers and other professionals who are familiar with the specific design of the project.

Mailing Address

8528 Davis Blvd., #134-246 North
Richland Hills, TX 76182 Tel#:
1-800-556-5785

3genmp.com

Warehouse Address

8550 Parkway Drive Leeds,
AL 35094 Tel#:
1-800-556-5785