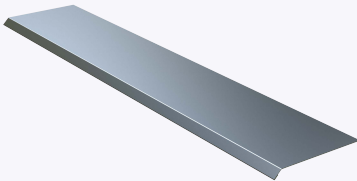
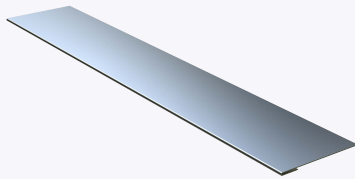


PRODUCT SUBMITTAL - DRIP EDGE

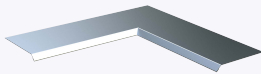
Hemmed Drip Edge



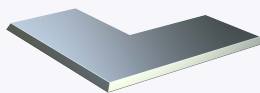
Flat Drip Edge



Hemmed
Inside Corner



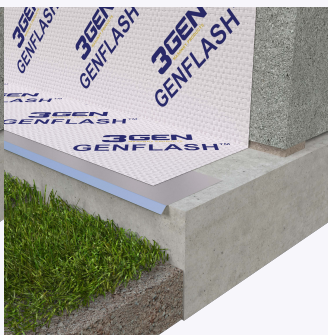
Hemmed
Outside Corner



Flat
Assembly



Hemmed
Assembly



Recycled Content:

Stainless Steel (Type 304)
68% Post-Consumer
18% Post-Industrial

Material conformance:

Drip Edge is used under flashing products to help aid in channeling moisture out of the cavity wall.

Drip Edge and Drip edge Corners are designed with a (3/8") 45 Degree Hemmed Edge.

This system adheres to the seismic regulations stipulated in the Uniform Building Code.

Stainless Steel: Type 304 ASTM A240 / A240M, ASTM A480 / A480M & ASTM A666.

Sizes/Finishes:

Drip Edge Size: 26 gauge x 8ft long.

Drip Edge Finish: Stainless Steel (Type 304) 2B / 2D Finish

Drip Edge Width: 1.5"-2" 3"

Drip Edge Option: Hemmed Flat

Drip Edge Corners 3" Wide x 8" x 8" long sections:

Outside Corner Inside Corner

In order to email your submittal sheet information, you must have Adobe Acrobat installed on your computer.

NOTE

All information, data, and recommendations on this submittal are provided for general informational purposes only and do not constitute any warranty, guarantee, representation, or professional opinion. No reliance shall be placed on this information. Product selection, suitability, design, installation, and code compliance are the sole responsibility of the architect, engineer, design professional, and contractor. All Products are provided subject to 3GEN Masonry Products, Inc. Terms and Conditions of Sale, including all limitations, disclaimers, exclusive remedies, and indemnity obligations.

Mailing Address

8528 Davis Blvd., #134-246 North
Richland Hills, TX 76182 Tel#:
1-800-556-5785

3genmp.com

Warehouse Address

8550 Parkway Drive Leeds,
AL 35094 Tel#:
1-800-556-5785