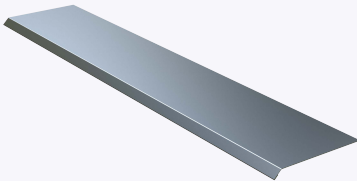
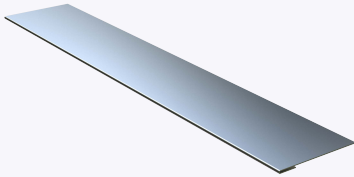


PRODUCT SUBMITTAL - DRIP EDGE

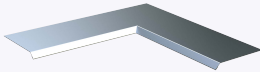
Hemmed Drip Edge



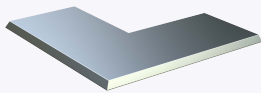
Flat Drip Edge



Hemmed
Inside Corner



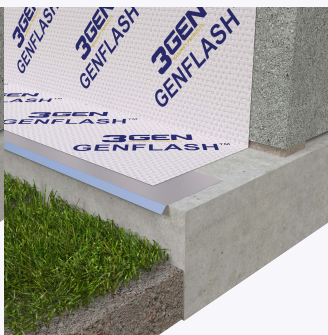
Hemmed
Outside Corner



Flat
Assembly



Hemmed
Assembly



Recycled Content:

Stainless Steel (Type 304)

68% Post-Consumer

18% Post-Industrial

Material conformance:

Drip Edge is used under flashing products to help aid in channeling moisture out of the cavity wall.

Drip Edge and Drip edge Corners are designed with a (3/8") 45 Degree Hemmed Edge.

This system adheres to the seismic regulations stipulated in the Uniform Building Code.

Stainless Steel: Type 304 ASTM A240 / A240M, ASTM A480 / A480M & ASTM A666.

Sizes/Finishes:

Drip Edge Size: 26 gauge x 8ft long.

Drip Edge Finish: Stainless Steel (Type 304) 2B / 2D Finish

Drip Edge Width: 1.5"-2" 3"

Drip Edge Option: Hemmed Flat

Drip Edge Corners 3" Wide x 8" x 8" long sections:

Outside Corner Inside Corner

In order to email your submittal sheet information, you must have Adobe Acrobat installed on your computer.

NOTE

The information contained on this submittal sheet does not constitute any professional opinion or judgement and should not be used as a substitute for any architect or engineer professional determinations. Each construction project is unique and the use of these products is the responsibility of the architects, engineers and other professionals who are familiar with the specific design of the project.

Mailing Address

8528 Davis Blvd., #134-246 North
Richland Hills, TX 76182 Tel#:
1-800-556-5785

3genmp.com

Warehouse Address

8550 Parkway Drive Leeds,
AL 35094 Tel#:
1-800-556-5785