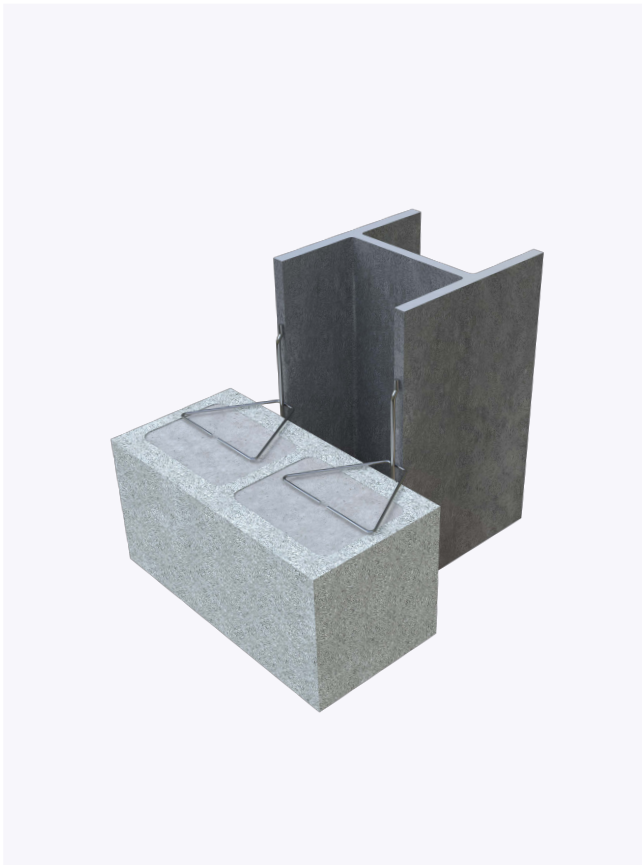


PRODUCT SUBMITTAL - Column Weld On Anchor



Recycled Content:

Mill Galvanized & Hot Dip Galvanized

85% Post-Consumer 10% Post-Industrial

Material Conformance:

Weld-On Ties are designed to anchor masonry to structural steel columns or beams while accommodating vertical differential movement between the steel and masonry.

Meets TMS 402/602 & ACI / ASCE 530 Building Code Requirements and Specification for Masonry Structures

Wire: (Carbon Steel) ASTM A1064 / A1064M

Tensile Strength: 80,000 psi. - Yield Point 70,000 psi.

Hot dip galvanized after fabrication.

ASTM A153 / ASTM A153-B2 (1.5 oz/ft)

Mill Galvanized ASTM A641 / ASTM A641M (0.1 oz/ft)

Sizes/Finishes:

Weld-On Tie Diameter: 1/4"

Weld-On Tie: Hot Dip Galvanized

Hot Dip Galvanized

Mill Galvanized

Plain Steel

In order to email your submittal sheet information, you must have Adobe Acrobat installed on your computer.

NOTE

The information provided herein is for general informational purposes only and does not constitute a professional opinion or engineering judgment. It is not intended to replace the design, detailing, or project-specific determinations of the licensed architect or engineer of record.

Each project is unique. The selection, application, suitability, and proper installation of these products are the sole responsibility of the design professional and installer based on project-specific conditions, substrate, exposure, and applicable codes.

All products and information referenced herein are subject to 3GEN Masonry Products, Inc.'s Terms and Conditions of Sale, including all limitations of liability, disclaimers of warranties, and exclusive remedies, as published and in effect at the time of sale.

Mailing Address

8528 Davis Blvd., #134-246 North
Richland Hills, TX 76182 Tel#:
1-800-556-5785

3genmp.com

Warehouse Address

8550 Parkway Drive Leeds,
AL 35094 Tel#:
1-800-556-5785