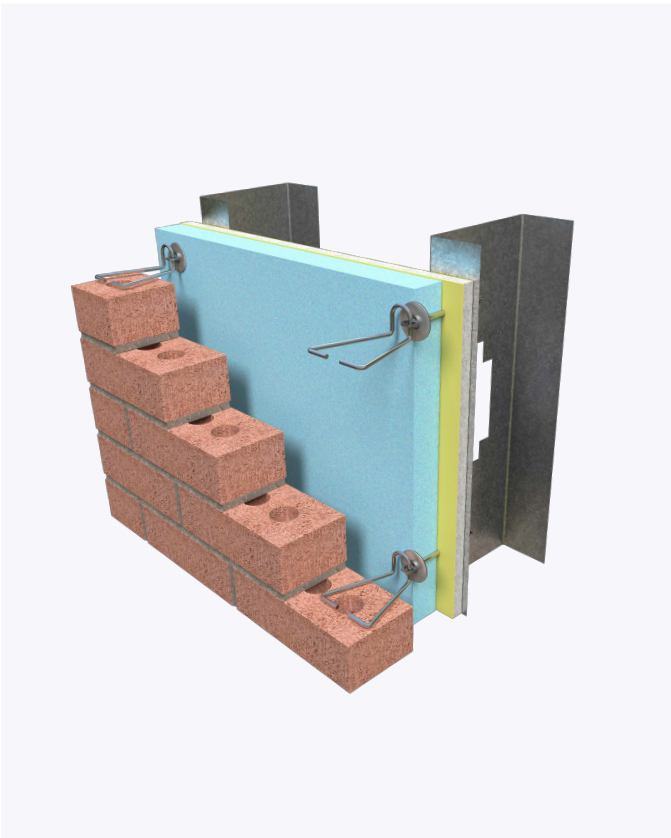
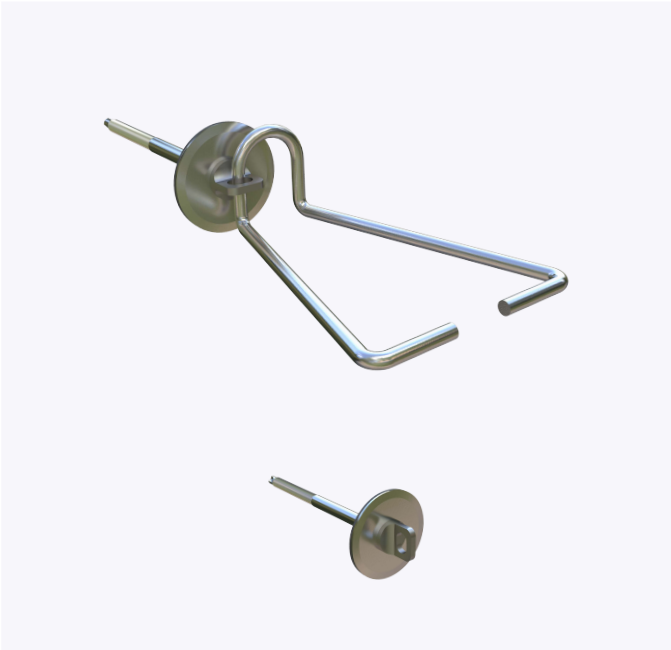


# PRODUCT SUBMITTAL - Barrel anchor (METAL STUD)

The Barrel Anchor is used for anchoring brick to metal stud.



## Recycled Content:

85% Post-Consumer  
10% Post-Industrial

## Material Conformance:

The Barrel Anchor is used for anchoring brick to metal stud.

Recommended Spacing is 16" O.C.

Meets TMS 402/602 & ACI / ASCE 530 Building Code Requirements and Specification for Masonry Structures

Wire: (Carbon Steel) ASTM A1064 / A1064M

Tensile Strength: 80,000 psi. - Yield Point 70,000 psi.

Hot dip galvanized after fabrication.

ASTM A153 / ASTM A153-B2 (1.5 oz/ft)

## Structural Performance:

Capable of withstanding 100 lbs load in tension and compression without deforming or developing play in excess of .05 inch. (Test results available upon request)

## Product Details:

Finish: Barrel Anchor : Polymer Coated 1000/HR Salt Spray Test

### Insulation / Gyp Board Thickness:

|      |        |        |        |        |
|------|--------|--------|--------|--------|
| 5/8" | 1"     | 1 1/2" | 2"     | 2 1/2" |
| 3"   | 3 1/2" | 4"     | 4 1/2" |        |

Barrel Anchor Wire Tie: Diameter: 3/16"

Barrel Anchor Wire Tie: Hot dip galvanized

### Barrel Anchor Wire Tie: Length

|    |    |    |    |    |
|----|----|----|----|----|
| 3" | 4" | 5" | 6" | 7" |
|----|----|----|----|----|

In order to email your submittal sheet information, you must have Adobe Acrobat installed on your computer.

## NOTE

The information contained on this submittal sheet does not constitute any professional opinion or judgement and should not be used as a substitute for any architect or engineer professional determinations. Each construction project is unique and the use of these products is the responsibility of the architects, engineers and other professionals who are familiar with the specific design of the project.

### Mailing Address

8528 Davis Blvd., #134-246 North  
Richland Hills, TX 76182 Tel#:  
1-800-556-5785

**3genmp.com**

### Warehouse Address

8550 Parkway Drive Leeds,  
AL 35094 Tel#:  
1-800-556-5785