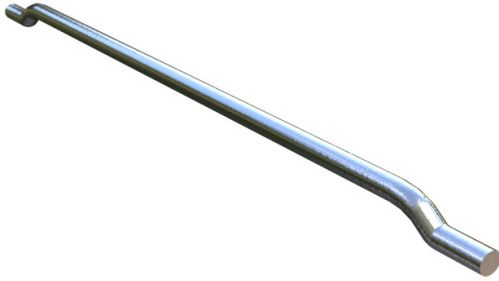




## PRODUCT SUBMITTAL - COLUMN WELD ON ANCHOR



### Recycled Content:

#### Mill Galvanized & Hot Dip Galvanized

85% Post-Consumer

10% Post-Industrial

### MATERIAL CONFORMANCE

Weld-On Ties are designed to anchor masonry to structural steel columns or beams while accommodating vertical differential movement between the steel and masonry.

Meets TMS 402/602 & ACI / ASCE 530 Building Code Requirements and Specification for Masonry Structures

Wire: (Carbon Steel) ASTM A1064 / A1064M

Tensile Strength: 80,000 psi. - Yield Point 70,000 psi.

Hot dip galvanized after fabrication.

ASTM A153 / ASTM A153-B2 (1.5 oz/ft)

Mill Galvanized ASTM A641 / ASTM A641M (0.1 oz/ft)

### SIZES / FINISHES

Weld-On Tie Diameter: 1/4"

Weld-On Tie: Hot Dip Galvanized

☐ Hot Dip Galvanized

☐ Mill Galvanized

☐ Plain Steel

RESET EMAIL PRINT

### NOTE

The information contained on this submittal sheet does not constitute any professional opinion or judgement and should not be used as a substitute for any architect or engineer professional determinations. Each construction project is unique and the use of these products is the responsibility of the architects, engineers and other professionals who are familiar with the specific design of the project.

#### Mailing Address

8528 Davis Blvd., #134-246  
North Richland Hills, TX 76182  
Tel#: 1-800-556-5785

[3genmp.com](http://3genmp.com)

#### Warehouse Address

8550 Parkway Drive  
Leeds, AL 35094  
Tel#: 1-800-556-5785