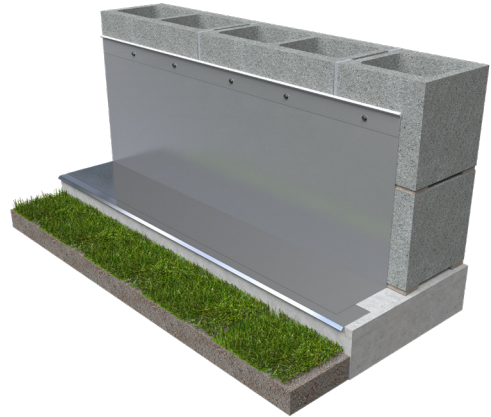
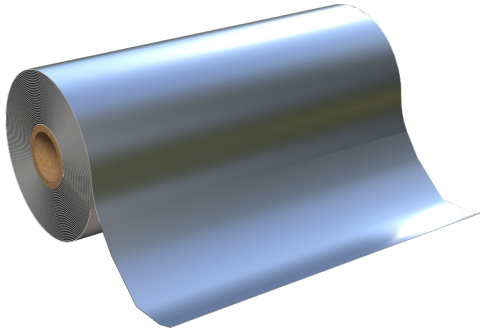




PRODUCT SUBMITTAL - GENFLASH SS



Recycled Content:

Stainless Steel (Type 304)

60% Post-Consumer

MATERIAL CONFORMANCE

GENFLASH™ SS is a stainless steel fabric flashing, categorized as Class A material, comprising a layer of polymeric fabric bonded with a single sheet of 304 stainless steel on one side.

This innovative product boasts exceptional puncture and tear resistance, engineered for enduring performance throughout the wall's lifespan.

High puncture resistance

Mold resistant: passes ASTM D3273

Fire resistant: passes ASTM E84, Class A

Life of the wall warranty

Compatible with:

Insulation

Spray Polyurethane Foam

Air barriers

Construction sealants

Thickness 2 mils stainless steel, 10 mils overall thickness

Stainless Steel: Type 304 ASTM A240 / A240M,

ASTM A480 / A480M & ASTM A666.

SIZES / FINISHES

GENFLASH SS (60 ft Long Rolls)

Widths:

☐ 12"

☐ 18"

☐ 24"

☐ 36"

Termination Bar Stainless Steel Type 304 Finish:

☐ Type (Lip)

☐ Type (Flat)

****GENFLASH SS requires the use of Termination Bars****

Drip Edge Type 304 SS Width:

☐ 1 1/2"

☐ 3"

Drip Edge Type 304 SS Corners:

☐ 3" Outside Corner

☐ 3" Inside Corner

Type 304 SS Corners & End Dams:

☐ Outside Corner

☐ Inside Corner

☐ End Dam

RESET EMAIL PRINT

NOTE

The information contained on this submittal sheet does not constitute any professional opinion or judgement and should not be used as a substitute for any architect or engineer professional determinations. Each construction project is unique and the use of these products is the responsibility of the architects, engineers and other professionals who are familiar with the specific design of the project.

Mailing Address

8528 Davis Blvd., #134-246
North Richland Hills, TX 76182
Tel#: 1-800-556-5785

3genmp.com

Warehouse Address

8550 Parkway Drive
Leeds, AL 35094
Tel#: 1-800-556-5785