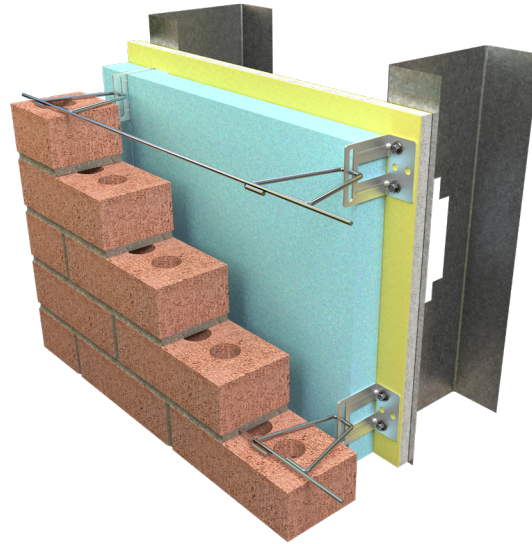
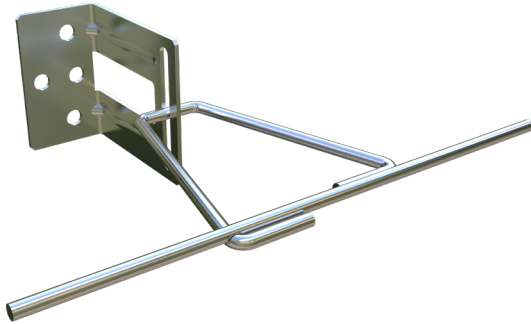




PRODUCT SUBMITTAL - H-13-V SEISMIC TRIANGLE

The H-13-V Seismic Triangle is used for anchoring brick to metal stud, wood stud, concrete block or poured concrete.



Recycled Content:

85% Post-Consumer

10% Post-Industrial

MATERIAL CONFORMANCE

The H-13-V Seismic Triangle's multifunctional design allows for horizontal installation with a hook or vertical installation with a triangle.

The H-13-V Seismic Triangle is used for anchoring brick to metal stud, wood stud, concrete block or poured concrete.

H-13-V Seismic Triangle can be used with rigid or spray foam insulation.

Recommended Spacing is 16" O.C.

Meets TMS 402/602 & ACI / ASCE 530 Building Code

Requirements and Specification for Masonry Structures

Sheet Metal: ASTM A1008 / A1008M

Wire: (Carbon Steel) ASTM A1064 / A1064M

Tensile Strength: 80,000 psi. - Yield Point 70,000 psi.

Hot dip galvanized after fabrication.

ASTM A153 / ASTM A153-B2 (1.5 oz/ft)

Structural Performance:

Capable of withstanding 100 lbs load in tension and compression without deforming or developing play in excess of .05 inch. (Test results available upon request)

SIZES / FINISHES

H-13 Finish: Hot Dip Galvanized

H-13 Material Thickness: 14 Gauge

Triangle Diameter: 3/16"

Triangle Finish: Hot Dip Galvanized

Insulation Thickness:

0" ☐ 1" ☐ 1 1/2" ☐ 2" ☐ 2 1/2" ☐
3" ☐ 3 1/2" ☐ 4" ☐ 4 1/2" ☐

Triangle Length:

3" ☐ 4" ☐ 5" ☐ 6" ☐ 7" ☐

Seismic Wire Hot Dip Galvanized: 9GA ☐ 3/16" ☐

RESET EMAIL PRINT

NOTE

The information contained on this submittal sheet does not constitute any professional opinion or judgement and should not be used as a substitute for any architect or engineer professional determinations. Each construction project is unique and the use of these products is the responsibility of the architects, engineers and other professionals who are familiar with the specific design of the project.

Mailing Address
8528 Davis Blvd., #134-246
North Richland Hills, TX 76182
Tel#: 1-800-556-5785

3genmp.com

Warehouse Address
8550 Parkway Drive
Leeds, AL 35094
Tel#: 1-800-556-5785