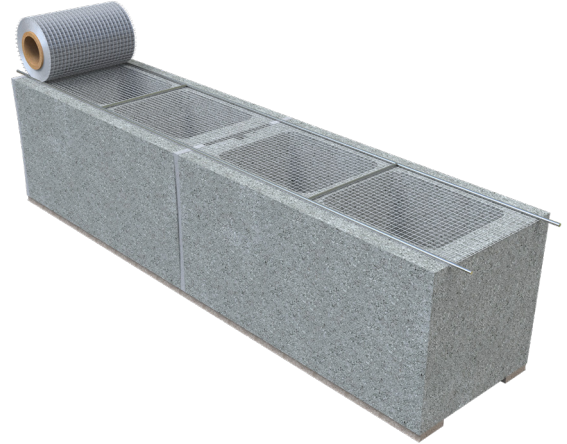
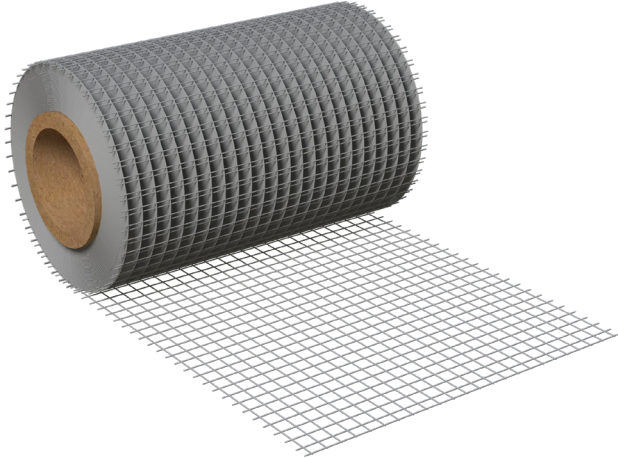




## PRODUCT SUBMITTAL - GROUT SCREEN



### Features:

Prevents grout from falling through block cores while directing grout flow to areas requiring reinforced concrete block.

Improves masonry anchor bonding in hollow block construction. Constructed from durable, non-corrosive 1/4" square polypropylene monofilament mesh, offering high tensile and burst strength without interfering with the mortar bond.

### Technical Data:

Polypropylene mesh tested according to ASTM D5034 standards.

### SIZES / FINISHES

Grout Screen 100ft Long Rolls:

- ☐ 4" Wide
- ☐ 6" Wide
- ☐ 8" Wide
- ☐ 10" Wide

RESET EMAIL PRINT

### NOTE

The information contained on this submittal sheet does not constitute any professional opinion or judgement and should not be used as a substitute for any architect or engineer professional determinations. Each construction project is unique and the use of these products is the responsibility of the architects, engineers and other professionals who are familiar with the specific design of the project.

**Mailing Address**  
8528 Davis Blvd., #134-246  
North Richland Hills, TX 76182  
Tel#: 1-800-556-5785

**3genmp.com**

**Warehouse Address**  
8550 Parkway Drive  
Leeds, AL 35094  
Tel#: 1-800-556-5785