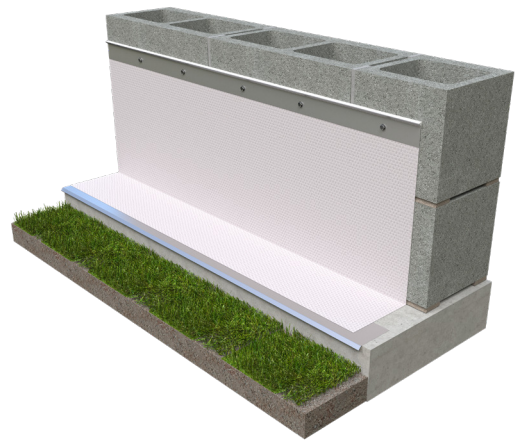
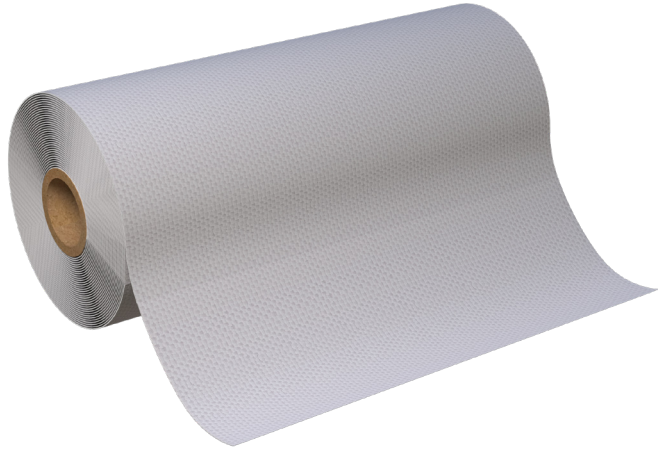




PRODUCT SUBMITTAL - GENFLASH



MATERIAL CONFORMANCE

GENFLASH Primerless is a 40-mil thick composite membrane with a custom clear adhesive. This adhesive is applied to polyethylene sheeting during manufacturing, resulting in flexible membrane perfect for various surfaces such as concrete, masonry, wood, steel, gypsum and insulation and including compatibility with insulated concrete forms (ICF).

Technical Data			
Mechanical	Typical Values	Unit	Test Method
Elongation	20	%	ASTM D412
Tensile Strength	5230	psi	ASTM D412
Low Temperature Flexibility	No Cracks	-	ASTM C765
Water Vapor Transmission	0.011	perms	ASTM D751
Water Absorption	1.48	%	ASTM E96
Mullen Burst	400	psi	ASTM D751

**Self seals around nails and screws

**Non Asphaltic Adhesive

**Adhesive will not drool at high temperatures

**UV resistant up to 120 days

**Film Color (White)

**No Primer Needed

**No Voc's, HFCC's and CFC's

SIZES / FINISHES

GENFLASH (75 ft Long Rolls)

Widths: 4" ☐ 6" ☐ 9" ☐ 12" ☐
16" ☐ 18" ☐ 24" ☐ 36" ☐

Termination Bar (LIP) Finish:

☐ Stainless Steel Type 304
☐ Aluminum

****GENFLASH requires the use of Termination Bars****

Drip Edge Type 304 SS Width:

☐ 1 1/2" ☐ 3"

Drip Edge Type 304 SS Corners & End Dams:

☐ 3" Outside Corner
☐ 3" Inside Corner

GENFLASH Type 304 SS Corners:

☐ Outside Corner
☐ Inside Corner
☐ End Dam

RESET EMAIL PRINT

NOTE

The information contained on this submittal sheet does not constitute any professional opinion or judgement and should not be used as a substitute for any architect or engineer professional determinations. Each construction project is unique and the use of these products is the responsibility of the architects, engineers and other professionals who are familiar with the specific design of the project.

Mailing Address
8528 Davis Blvd., #134-246
North Richland Hills, TX 76182
Tel#: 1-800-556-5785

3genmp.com

Warehouse Address
8550 Parkway Drive
Leeds, AL 35094
Tel#: 1-800-556-5785