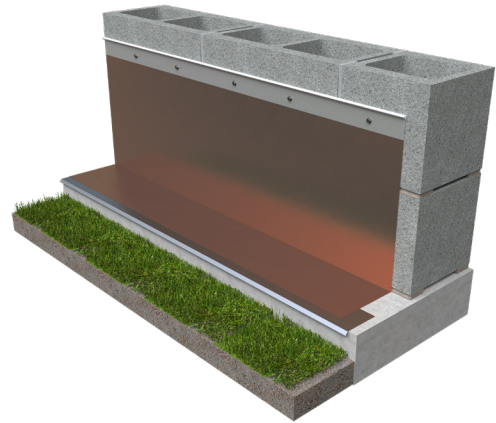
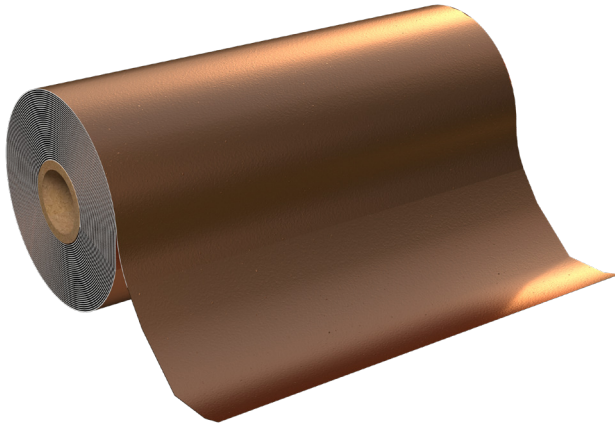




PRODUCT SUBMITTAL - GENFLASH COPPER SA



Recycled Content:

90% Recycled Content

MATERIAL CONFORMANCE

GENFLASH COPPER SA is engineered with a flexible sheet of copper, available in 3 oz., 5 oz., or 7 oz. weights, laminated on one side with polymer fabric, butyl adhesive, and a siliconized release liner.

This innovative product boasts exceptional puncture and tear resistance, engineered for enduring performance throughout the wall's lifespan.

High puncture resistance
Mold resistant: passes ASTM D3273
Fire resistant: passes ASTM E84, Class A
Life of the wall warranty

Compatible with:
Insulation
Spray Polyurethane Foam,
Air barriers
Construction sealants

SIZES / FINISHES

GENFLASH COPPER SA (25 ft Long Rolls)

Widths: ☐ 12" ☐ 18" ☐ 24" ☐ 36"

- ☐ Termination Bar (LIP) Finish:
- ☐ Stainless Steel Type 304
- ☐ Aluminum

****GENFLASH COPPER SA requires the use of a Termination Bar****

Drip Edge Type 304 SS Width:

- ☐ 3"

Drip Edge Type 304 SS Corners:

- ☐ 3" Outside Corner
- ☐ 3" Inside Corner

GENFLASH Type 304 SS Corners & End Dams

- ☐ Outside Corner
- ☐ Inside Corner
- ☐ End Dam

RESET EMAIL PRINT

NOTE

The information contained on this submittal sheet does not constitute any professional opinion or judgement and should not be used as a substitute for any architect or engineer professional determinations. Each construction project is unique and the use of these products is the responsibility of the architects, engineers and other professionals who are familiar with the specific design of the project.

Mailing Address
8528 Davis Blvd., #134-246
North Richland Hills, TX 76182
Tel#: 1-800-556-5785

3genmp.com

Warehouse Address
8550 Parkway Drive
Leeds, AL 35094
Tel#: 1-800-556-5785