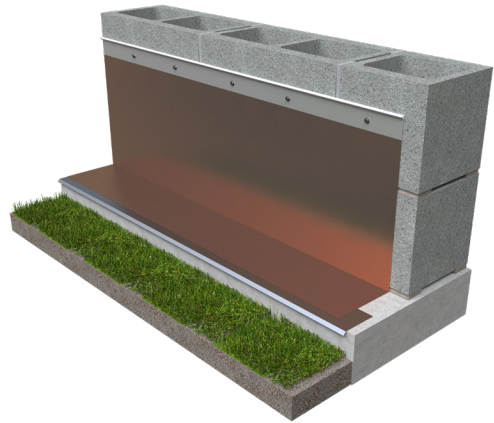
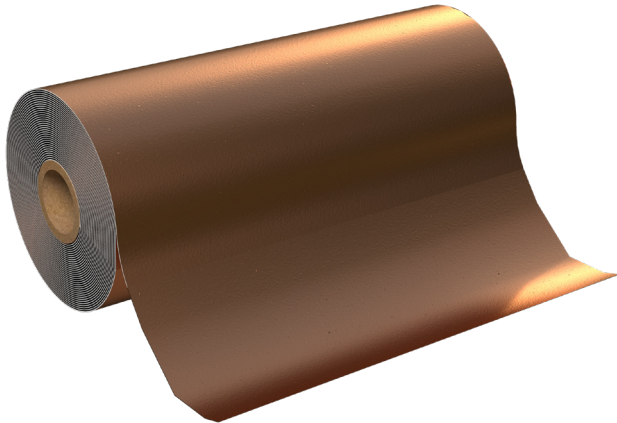


PRODUCT SUBMITTAL - GENFLASH COPPER



Recycled Content:

90% Recycled Content

MATERIAL CONFORMANCE

GENFLASH COPPER Fabric Flashing (non-asphaltic) consists of a single, solid sheet of copper bonded on both sides to layers of polymeric fabric.

This innovative product boasts exceptional puncture and tear resistance, engineered for enduring performance throughout the wall's lifespan.

High puncture resistance

Mold resistant: passes ASTM D3273

Fire resistant: passes ASTM E84, Class A

Life of the wall warranty

Compatible with:

Insulation

Spray Polyurethane Foam,

Air barriers

Construction sealants

SIZES / FINISHES

GENFLASH COPPER (25 ft Long Rolls)

Widths: 12" 18" 24" 36"

Thickness: 3oz 5oz 7oz

Termination Bar (LIP) Finish:

Stainless Steel Type 304

Aluminum

****GENFLASH COPPER requires the use of a Termination Bar****

Drip Edge Type 304 SS Width:

3"

Drip Edge Type 304 SS Corners:

3" Outside Corner

3" Inside Corner

GENFLASH Type 304 SS Corners & End Dams

Outside Corner

Inside Corner

End Dam

RESET EMAIL PRINT

NOTE

The information contained on this submittal sheet does not constitute any professional opinion or judgement and should not be used as a substitute for any architect or engineer professional determinations. Each construction project is unique and the use of these products is the responsibility of the architects, engineers and other professionals who are familiar with the specific design of the project.

Mailing Address

8528 Davis Blvd., #134-246
North Richland Hills, TX 76182
Tel#: 1-800-556-5785

3genmp.com

Warehouse Address

8550 Parkway Drive
Leeds, AL 35094
Tel#: 1-800-556-5785