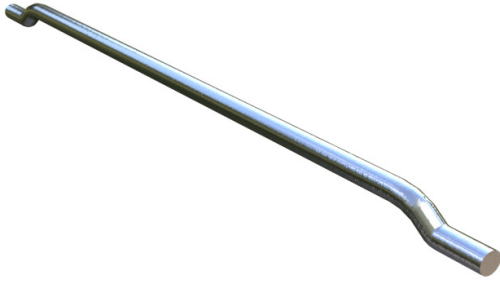




PRODUCT SUBMITTAL - COLUMN WELD ON ANCHOR



Recycled Content:

Mill Galvanized & Hot Dip Galvanized

85% Post-Consumer

10% Post-Industrial

MATERIAL CONFORMANCE

Weld-On Ties are designed to anchor masonry to structural steel columns or beams while accommodating vertical differential movement between the steel and masonry.

Meets TMS 402/602 & ACI / ASCE 530 Building Code Requirements and Specification for Masonry Structures

Wire: (Carbon Steel) ASTM A1064 / A1064M

Tensile Strength: 80,000 psi. - Yield Point 70,000 psi.

Hot dip galvanized after fabrication.

ASTM A153 / ASTM A153-B2 (1.5 oz/ft)

Mill Galvanized ASTM A641 / ASTM A641M (0.1 oz/ft)

SIZES / FINISHES

Weld-On Tie Diameter: 1/4"

Weld-On Tie: Hot Dip Galvanized

Hot Dip Galvanized

Mill Galvanized

Plain Steel

RESET EMAIL PRINT

NOTE

The information contained on this submittal sheet does not constitute any professional opinion or judgement and should not be used as a substitute for any architect or engineer professional determinations. Each construction project is unique and the use of these products is the responsibility of the architects, engineers and other professionals who are familiar with the specific design of the project.

Mailing Address

8528 Davis Blvd., #134-246
North Richland Hills, TX 76182
Tel#: 1-800-556-5785

3genmp.com

Warehouse Address

8550 Parkway Drive
Leeds, AL 35094
Tel#: 1-800-556-5785