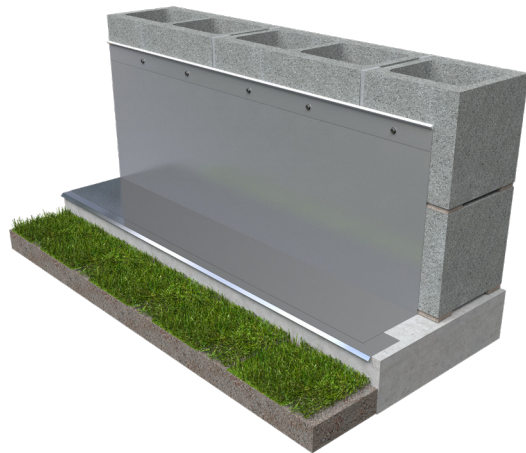
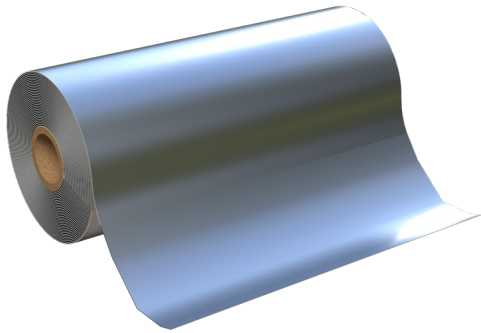




PRODUCT SUBMITTAL - GENFLASH SS SA



Recycled Content:

Stainless Steel (Type 304)

60% Post-Consumer

MATERIAL CONFORMANCE

GENFLASH SS SA is engineered with a pliable 2 mil sheet of Type 304 stainless steel, accompanied by 10 mils of butyl adhesive with release liner. Serving as a self-adhering metal membrane, GENFLASH SS SA stands out for its exceptional puncture and tear resistance.

Bare stainless steel surface for sealant adhesion

Butyl adhesive/watertight bond

No primer required

UV resistant

High puncture resistance

Mold resistant: passes ASTM D3273

Fire resistant: passes ASTM E84, Class A

Life of the wall warranty

Passes AAMA 711-20

Passes air barrier material test: ASTM E2178-13

Compatible with: Insulation, Spray Polyurethane Foam, Air barriers and most sealants

Thickness 2 mils stainless steel, 10 mils of adhesive

Stainless Steel: Type 304 ASTM A240 / A240M, ASTM A480 / A480M & ASTM A666.

SIZES / FINISHES

GENFLASH 304 SS SA (50 ft Long Rolls)

Widths:

12" 18" 24" 36"

Termination Bar Stainless Steel Type 304 Finish:

Type (Lip)

Type (Flat)

GENFLASH 304 SS SA requires the use of Termination Bars

Drip Edge Type 304 SS Width:

1 1/2" 3"

Drip Edge Type 304 SS Corners:

3" Outside Corner

3" Inside Corner

GENFLASH Type 304 SS Corners & End Dams:

Outside Corner

Inside Corner

End Dam

RESET EMAIL PRINT

NOTE

The information contained on this submittal sheet does not constitute any professional opinion or judgement and should not be used as a substitute for any architect or engineer professional determinations. Each construction project is unique and the use of these products is the responsibility of the architects, engineers and other professionals who are familiar with the specific design of the project.

Mailing Address

8528 Davis Blvd., #134-246
North Richland Hills, TX 76182
Tel#: 1-800-556-5785

3genmp.com

Warehouse Address

8550 Parkway Drive
Leeds, AL 35094
Tel#: 1-800-556-5785