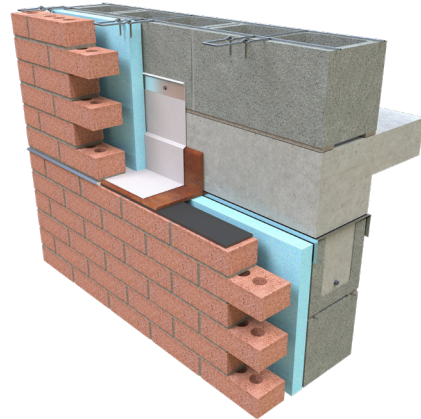
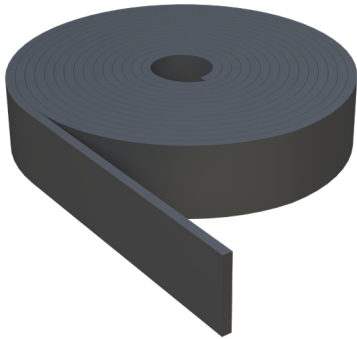




PRODUCT SUBMITTAL - NEOPRENE EXPANSION JOINT



Material Conformance

Closed-cell Neoprene is durable and water-resistant. It can handle up to 50% compression, and is manufactured to meet ASTM D 1056, RE41 Grade 2A1.

Neoprene Expansion Joint

□ 3/8" X 3" X 50 FT Long

Physical Properties	Typical Value
Density	3 to 10 pounds per cubic foot (PCF)
Compression Set	Up to 50% compression recovery
Tensile Strength	Greater than 150 psi
Elongation at Break	100% to 400%
Temperature Range	-40°F to 200°F (-40°C to 93°C)
Water Absorption	Less than 5% by weight
Shore Hardness	20-30 Shore A
Thermal Conductivity	Low (Good insulation properties)
Chemical Resistance	Resistant to oils, chemicals, and ozone

RESET EMAIL PRINT

NOTE

The information contained on this submittal sheet does not constitute any professional opinion or judgement and should not be used as a substitute for any architect or engineer professional determinations. Each construction project is unique and the use of these products is the responsibility of the architects, engineers and other professionals who are familiar with the specific design of the project.

Mailing Address
8528 Davis Blvd., #134-246
North Richland Hills, TX 76182
Tel#: 1-800-556-5785

3genmp.com

Warehouse Address
8550 Parkway Drive
Leeds, AL 35094
Tel#: 1-800-556-5785