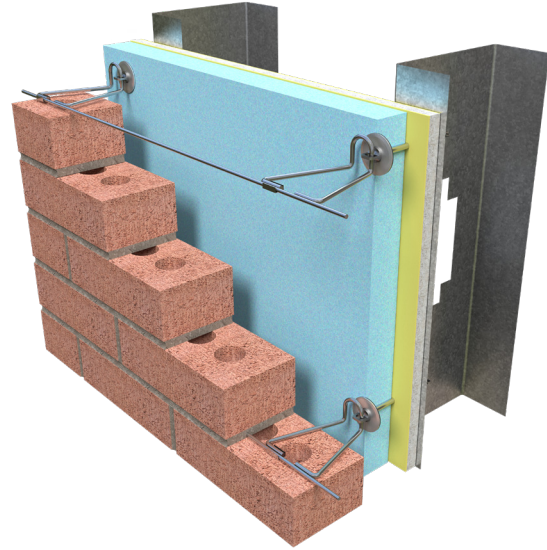
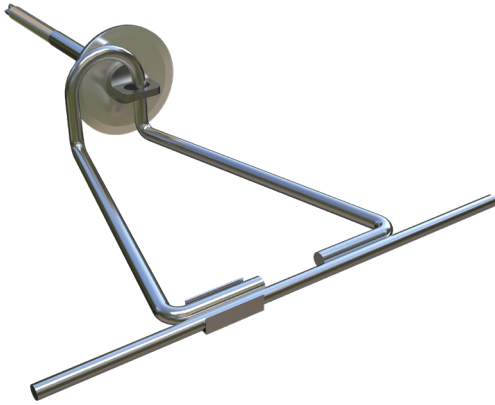




PRODUCT SUBMITTAL - BARREL ANCHOR – METAL STUD SEISMIC WELDED CLIP



Recycled Content:

85% Post-Consumer

10% Post-Industrial

MATERIAL CONFORMANCE

The Barrel veneer anchor is used for anchoring brick to metal stud.

Recommended Spacing is 16" O.C.

Meets TMS 402/602 & ACI / ASCE 530 Building Code Requirements and Specification for Masonry Structures

Wire: (Carbon Steel) ASTM A1064 / A1064M

Tensile Strength: 80,000 psi. - Yield Point 70,000 psi.

Hot dip galvanized after fabrication.

ASTM A153 / ASTM A153-B2 (1.5 oz/ft)

Structural Performance:

Capable of withstanding 100 lbs load in tension and compression without deforming or developing play in excess of .05 inch. (Test results available upon request)

SIZES / FINISHES

Finish: Barrel Anchor: Polymer Coated 1000/HR Salt Spray Test

Barrel Anchor Wire Tie: Hot Dip Galvanized

Insulation / Gyp Board Thickness:

5/8" 1" 1 1/2" 2" 2 1/2"
3" 3 1/2" 4" 4 1/2"

Barrel Anchor Wire Tie: Diameter: 3/16"

Barrel Anchor Wire Tie: Hot dip galvanized

Barrel Anchor Wire Tie: Length:

3" 4" 5" 6" 7"

Seismic Wire Hot Dip Galvanized: 9 GA. 3/16"

RESET EMAIL PRINT

NOTE

The information contained on this submittal sheet does not constitute any professional opinion or judgement and should not be used as a substitute for any architect or engineer professional determinations. Each construction project is unique and the use of these products is the responsibility of the architects, engineers and other professionals who are familiar with the specific design of the project.

Mailing Address

8528 Davis Blvd., #134-246
North Richland Hills, TX 76182
Tel#: 1-800-556-5785

3genmp.com

Warehouse Address

8550 Parkway Drive
Leeds, AL 35094
Tel#: 1-800-556-5785