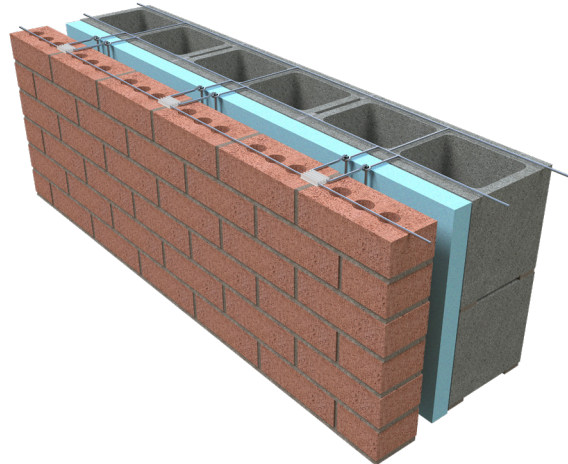




# PRODUCT SUBMITTAL - LADDER EYE SEISMIC PLASTIC CLIP

Ladder Eye Seismic Plastic Clip is designed for embedment in the horizontal mortar joints of concrete masonry units.



**Recycled Content:**

85% Post-Consumer

10% Post-Industrial

**MATERIAL CONFORMANCE:**

Ladder Eye Seismic Plastic Clip is designed for embedment in the horizontal mortar joints of concrete masonry unit.

ASTM A951/A951M (Standard Specification for Steel Wire for Masonry Joint Reinforcing.

Meets TMS 402/602 & ACI / ASCE 530 Building Code Requirements and Specification for Masonry Structures

Wire: (Carbon Steel) ASTM A1064 / A1064M

Tensile Strength: 80,000 psi. - Yield Point 70,000 psi.

Hot dip galvanized after fabrication.

ASTM A153 / ASTM A153-B2 (1.5 oz/ft)

**Structural Performance:**

Capable of withstanding 100 lbs load in tension and compression without deforming or developing play in excess of .05 inch. (Test results available upon request)

**SIZES / FINISHES**

Finishes:

Hot Dip Galvanized

Wire Size:

	Side Rods	Cross Rods
<input type="checkbox"/> Standard	9 Ga. (.148")	9 Ga. (.148")
<input type="checkbox"/> Extra Heavy	3/16" (.187")	9 Ga. (.148")
<input type="checkbox"/> Extra Heavy Duty	3/16" (.187")	3/16" (.187")

CMU / Block Size Hook Finish: Hot Dip Galvanized

4"  6"  8"  10"  12"

Insulation Thickness: 0"  1"  1 1/2"

2"  2 1/2"  3"  3 1/2"  4"

Hook Length:

3"  4"  5"  6"  7"

Seismic Plastic Clip:

Seismic Wire Hot Dip Galvanized: 9 GA.  3/16"

**RESET    EMAIL    PRINT**

**NOTE**

The information contained on this submittal sheet does not constitute any professional opinion or judgement and should not be used as a substitute for any architect or engineer professional determinations. Each construction project is unique and the use of these products is the responsibility of the architects, engineers and other professionals who are familiar with the specific design of the project.

**Mailing Address**  
 8528 Davis Blvd., #134-246  
 North Richland Hills, TX 76182  
 Tel#: 1-800-556-5785

**3genmp.com**

**Warehouse Address**  
 8550 Parkway Drive  
 Leeds, AL 35094  
 Tel#: 1-800-556-5785