



3GEN[™]
MASONRY PRODUCTS

THE LEADER IN MASONRY SOLUTIONS
www.3genmp.com

Material Conformance -----	2	Rebar Positioners -----	11
Masonry Joint Reinforcement -----	3	Z-Strap -----	11
Masonry Veneer Anchors -----	4-5	GENFLASH™ Flashing -----	12
Seismic Anchors -----	6-9	Flashing End Dams and Corners -----	13
Seismic Joint Reinforcement -----	10	Flashing Accessories -----	14
Column Weld-on Anchors -----	11	Masonry Accessories -----	15

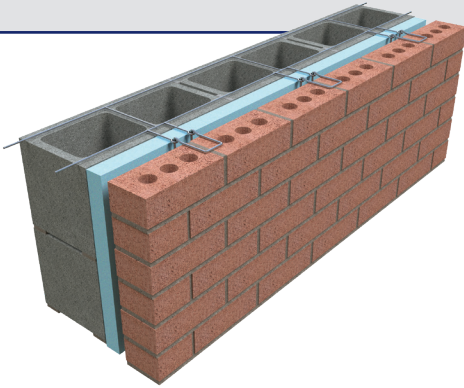
Material Conformance

WIRE	
MATERIALS:	
Carbon steel wire:	ASTM A1064/A1064M (Tensile Strength - 80,000 psi)
Steel wire for masonry Joint reinforcement:	ASTM A951/A951M -TMS 402-13/ ACI 530-13/ASCE 5-13
FINISHES:	
Brite Basic:	No coating
Mill Galvanized:	ASTM A641/A641M (0.1 oz/ft ²)
Hot Dip Galvanized:	ASTM A153/A153M-B2 (1.5 oz/ft ²)
Stainless Steel:	ASTM A580/A580M -AISI Type 304 (316 on special order)
DIAMETER:	9 Gauge (.148" or W1.7) 3/16" (.187" or W2.8)

SHEET STEEL	
MATERIALS:	
Carbon steel sheets:	ASTM A1008/A1008M
FINISHES:	
Mill Galvanized:	ASTM A653/A653M Class G60 (0.6 oz/ft ²)
Hot Dip Galvanized:	ASTM A153/A153M-B2 (1.5 oz/ft ²)
Stainless Steel:	ASTM A666, ASTM A480/ A480M, and ASTM A240/ A240M -AISI Type 304 (316 on special order)

The following 3GEN Masonry Products, Inc. items meet or exceed the requirements of the TMS 402/602-22 Building Code and Specifications for Masonry Structures.

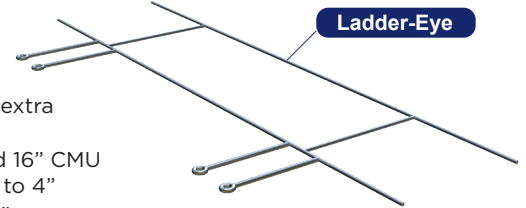
The information contained in this catalog does not constitute any professional opinion or judgment and should not be used as a substitute for any architect or engineer professional determinations. Each construction project is unique and the use of these products is the responsibility of the architects, engineers and other professionals who are familiar with the specific design of the project.



Designed for embedment in the horizontal mortar joints of concrete masonry units.

- Cross rods welded 16" O.C.
- 10 ft. long pieces
- Hot dip galvanized
- Available in standard, heavy duty, and extra heavy duty wire diameters
- Available for 4", 6", 8", 10", 12", 14", and 16" CMU
- Available for insulation thicknesses up to 4"
- Available Hook lengths: 3", 4", 5", 6", 7"

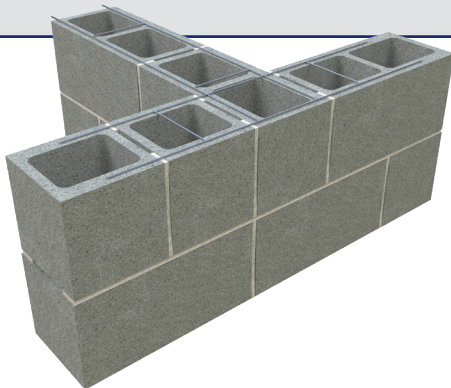
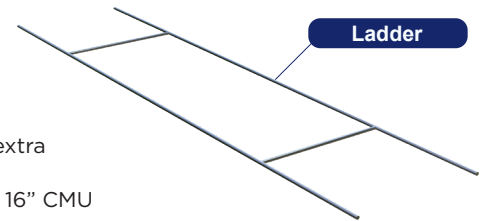
Ladder-Eye



Designed for embedment in the horizontal mortar joints of concrete masonry units.

- Cross rods welded 16" O.C.
- 10 ft. long pieces
- Available mill galvanized and hot dip galvanized finishes
- Available in standard, heavy duty, and extra heavy duty wire diameters
- Available for 4", 6", 8", 10", 12", 14", and 16" CMU

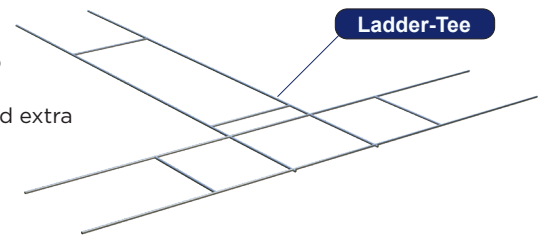
Ladder



Designed for embedment in the horizontal mortar joints of concrete masonry units.

- Cross rods welded 16" O.C.
- Available mill galvanized and hot dip galvanized finishes
- Available in standard, heavy duty, and extra heavy duty wire diameters
- Available for 4", 6", 8", 10", 12", 14", and 16" CMU

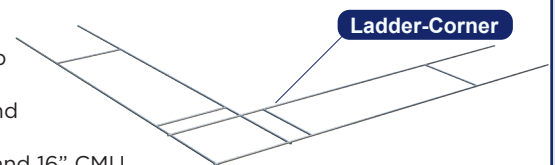
Ladder-Tee

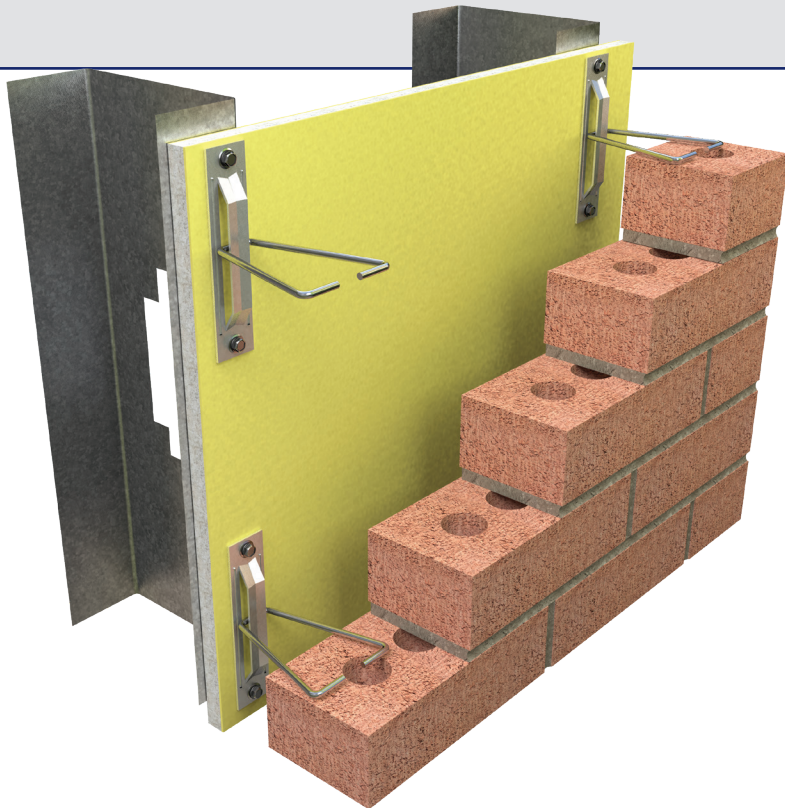


Designed for embedment in the horizontal mortar joints of concrete masonry units.

- Cross rods welded 16" O.C.
- Available mill galvanized and hot dip galvanized finishes
- Available in standard, heavy duty, and extra heavy duty wire diameters
- Available for 4", 6", 8", 10", 12", 14", and 16" CMU

Ladder-Corner



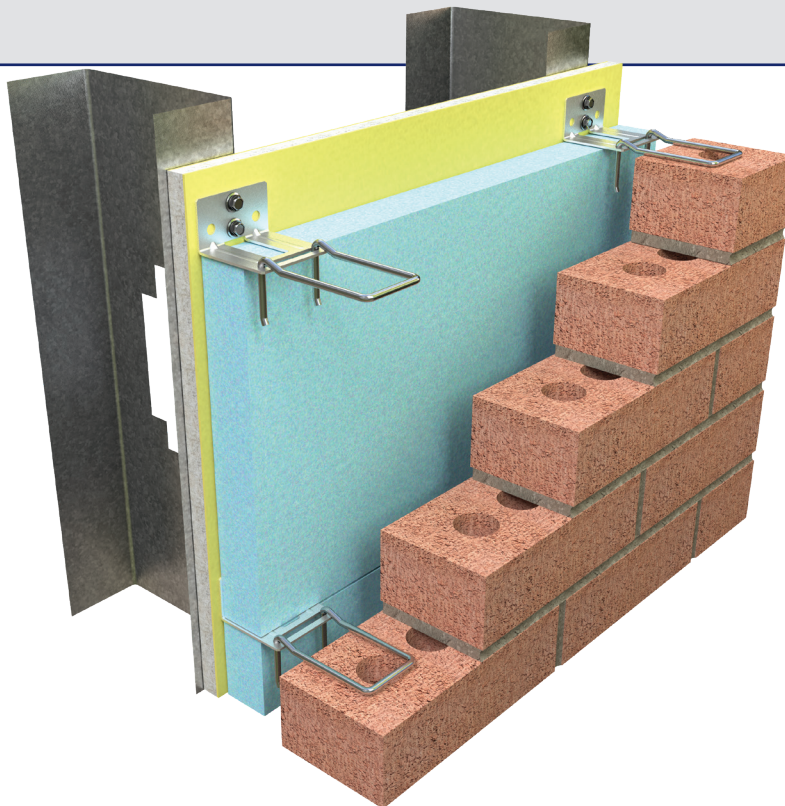


H-10 Veneer Anchor

The H-10 veneer anchor is used for anchoring brick to metal stud, wood stud, concrete block or poured concrete.

Capable of withstanding 100 lbs load in tension and compression without deforming or developing play in excess of .05 inch.

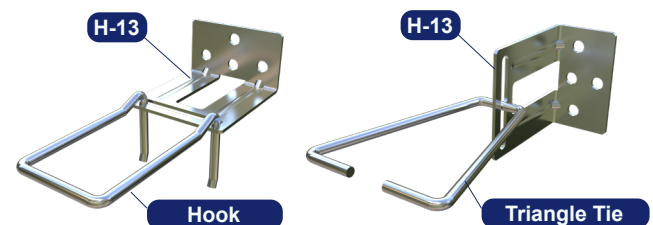
- Available in 14 and 12 gauge thickness
- 16" O.C. recommended spacing
- Do not install on top of insulation
- Available hot dip galvanized or type 304 stainless steel
- Triangle Tie diameter 3/16"
- Available Triangle Tie lengths: 3", 4", 5", 6", 7", 9"



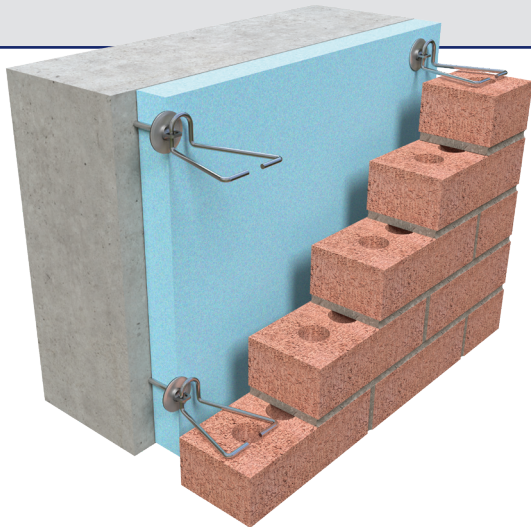
H-13 Veneer Anchor

Used for anchoring brick to metal stud, wood stud, concrete block or poured concrete.

- Can be used with rigid or spray foam insulation
- 16" O.C. spacing recommended
- Available hot dip galvanized or type 304 stainless steel
- H-13 material thickness 14 gauge
- Hook & Triangle diameter 3/16"
- H-13 accommodates insulation thicknesses from 0" to 4 1/2" - specify thickness when ordering
- Available Hook lengths: 3", 4", 5", 6", 7"
- Available Triangle Tie lengths: 3", 4", 5", 6", 7", 9"



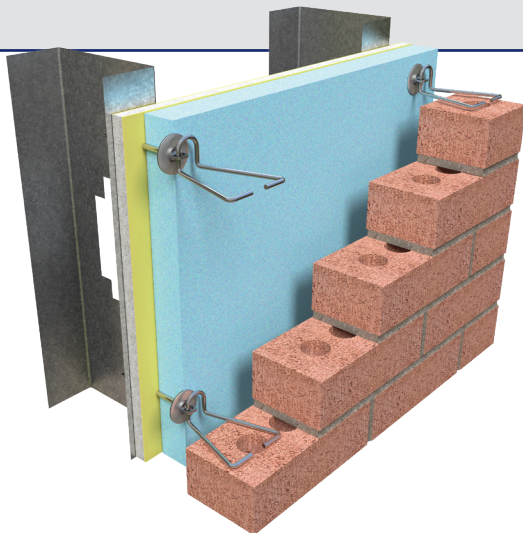
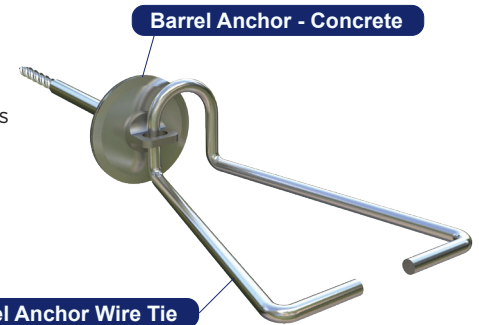
Installed horizontally with Hook or vertically with Triangle Tie



Barrel Anchor - Concrete

The Concrete Barrel Anchor is used for anchoring brick to concrete block, poured concrete and wood stud.

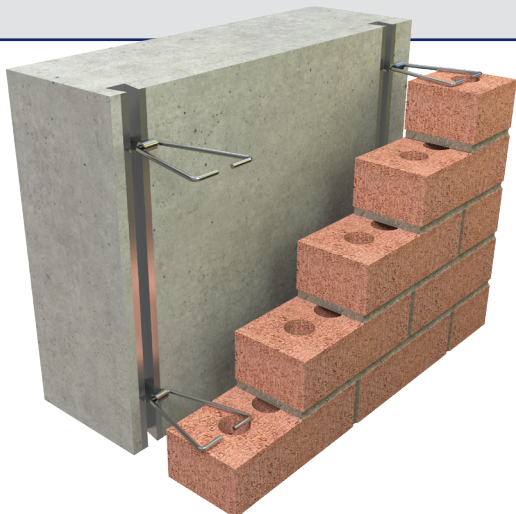
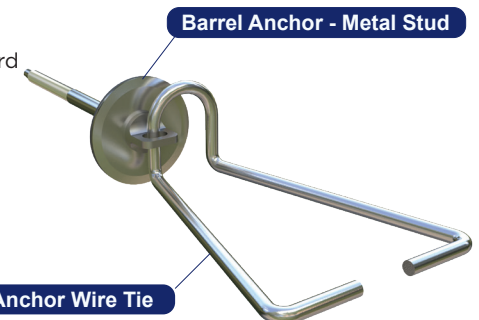
- Accommodates insulation thicknesses from 0" to 4 1/2"
- Specify thickness when ordering
- 16" O.C. recommended spacing
- Hot dip galvanized
- Wire Tie diameter 3/16"
- Available Wire Tie lengths: 3", 4", 5", 6", 7"



Barrel Anchor - Metal Stud

The Barrel Anchor is used for anchoring brick to metal stud.

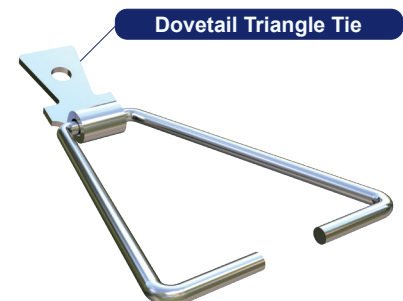
- Accommodates insulation / gyp. board thicknesses from 5/8" to 4 1/2" specify thickness when ordering
- 16" O.C. recommended spacing
- Hot dip galvanized
- Wire Tie diameter 3/16"
- Available Wire Tie lengths: 3", 4", 5", 6", 7"

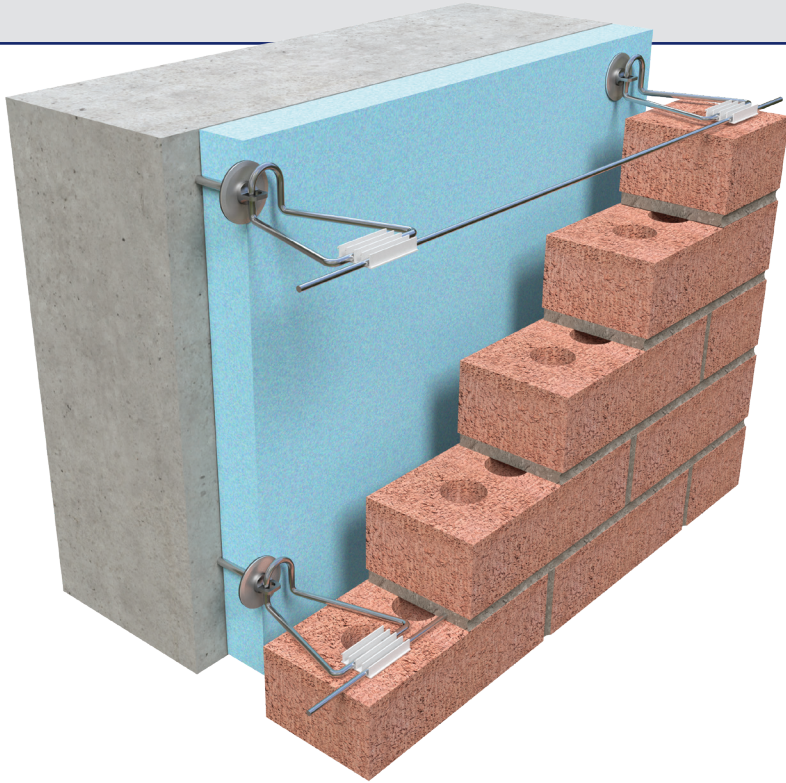


Dovetail Triangle Tie

Dovetail triangle for use in dovetail slot or surface mounted to concrete, concrete block or brick.

- Hot dip galvanized
- Dovetail Head: 12 gauge
- Triangle tie diameter 3/16"
- Available Dovetail Tie Lengths: 3", 4", 5", 7", 9"





Barrel Anchor - Concrete (Plastic Clip)

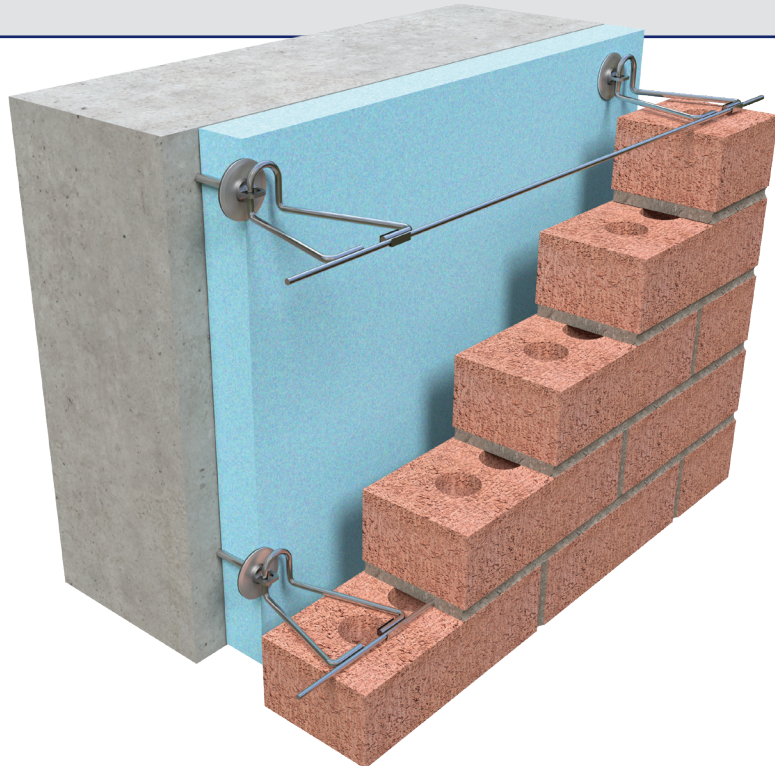
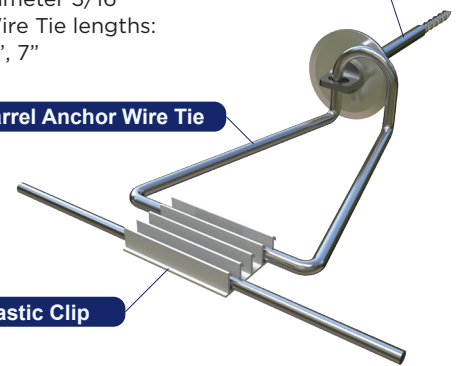
The Barrel Anchor - Concrete Seismic is used for anchoring brick to concrete block, poured concrete & wood stud with continuous seismic wire & clip.

- Seismic wire available in 3/16" and 9 gauge
- Accommodates insulation thicknesses from 0" to 4 1/2" - specify thickness when ordering
- 16" O.C. recommended spacing
- Hot dip galvanized
- Wire Tie diameter 3/16"
- Available Wire Tie lengths: 3", 4", 5", 6", 7"

Barrel Anchor - Concrete

Barrel Anchor Wire Tie

Seismic Plastic Clip



Barrel Anchor - Concrete (Welded Clip)

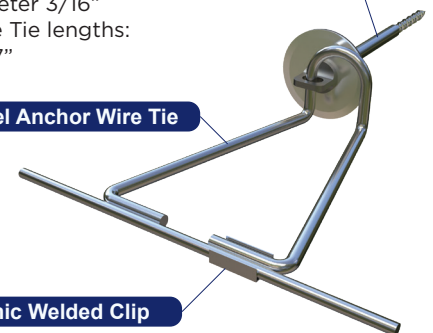
The Barrel Anchor - Concrete Seismic is used for anchoring brick to concrete block, poured concrete & wood stud with continuous wire & welded clip.

- Seismic wire available in 3/16" and 9 gauge
- Accommodates insulation thicknesses from 0" to 4 1/2" - specify thickness when ordering
- 16" O.C. recommended spacing
- Hot dip galvanized
- Wire Tie diameter 3/16"
- Available Wire Tie lengths: 3", 4", 5", 6", 7"

Barrel Anchor - Concrete

Barrel Anchor Wire Tie

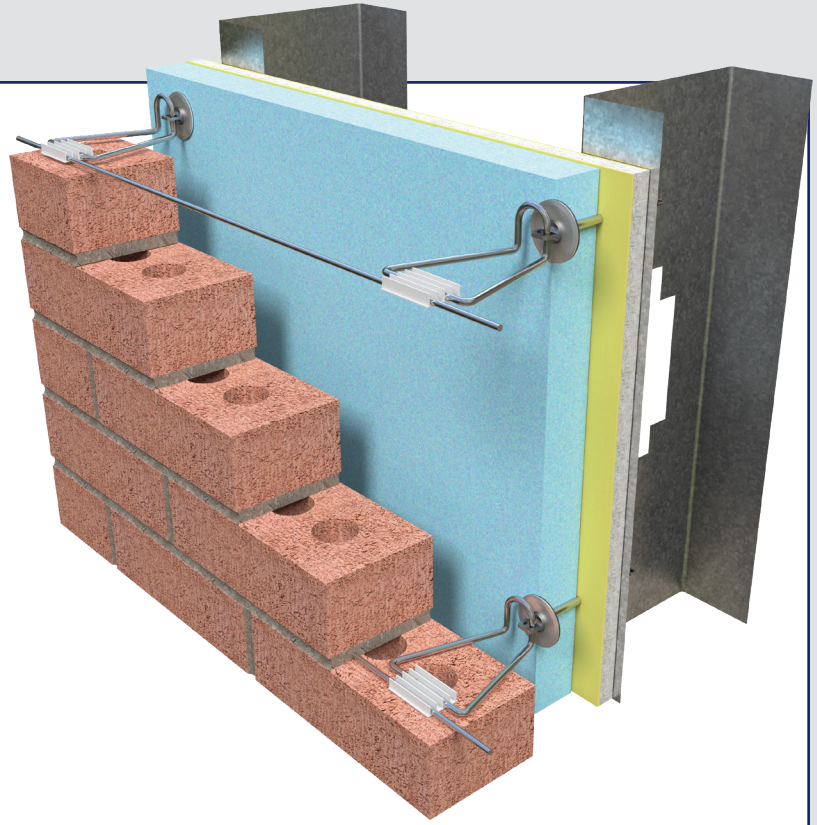
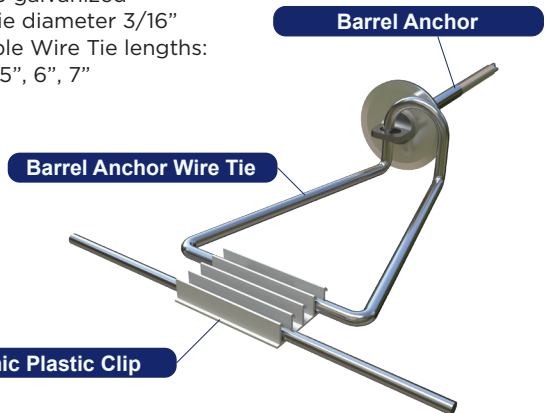
Seismic Welded Clip



Barrel Anchor - Metal Stud (Plastic Clip)

The Barrel Anchor Seismic is used for anchoring brick to metal stud with continuous seismic wire & clip.

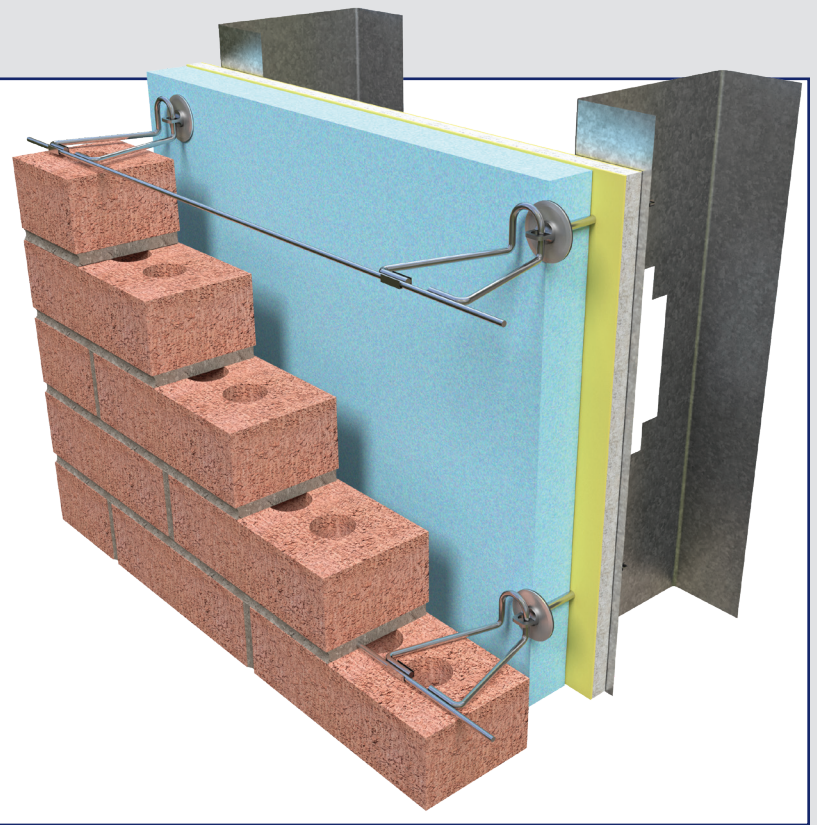
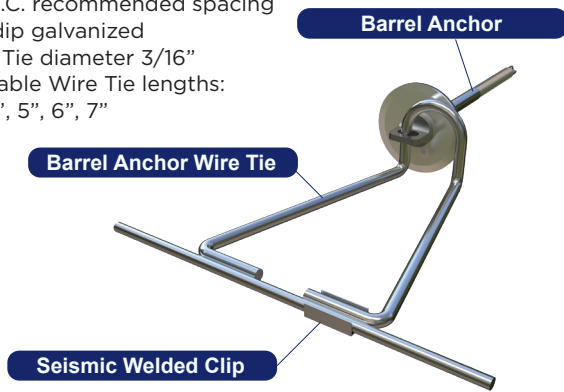
- Seismic wire available in 3/16" and 9 gauge
- Accommodates insulation / gyp. board thicknesses from 5/8" to 4 1/2" - specify thickness when ordering
- 16" O.C. recommended spacing
- Hot dip galvanized
- Wire Tie diameter 3/16"
- Available Wire Tie lengths: 3", 4", 5", 6", 7"

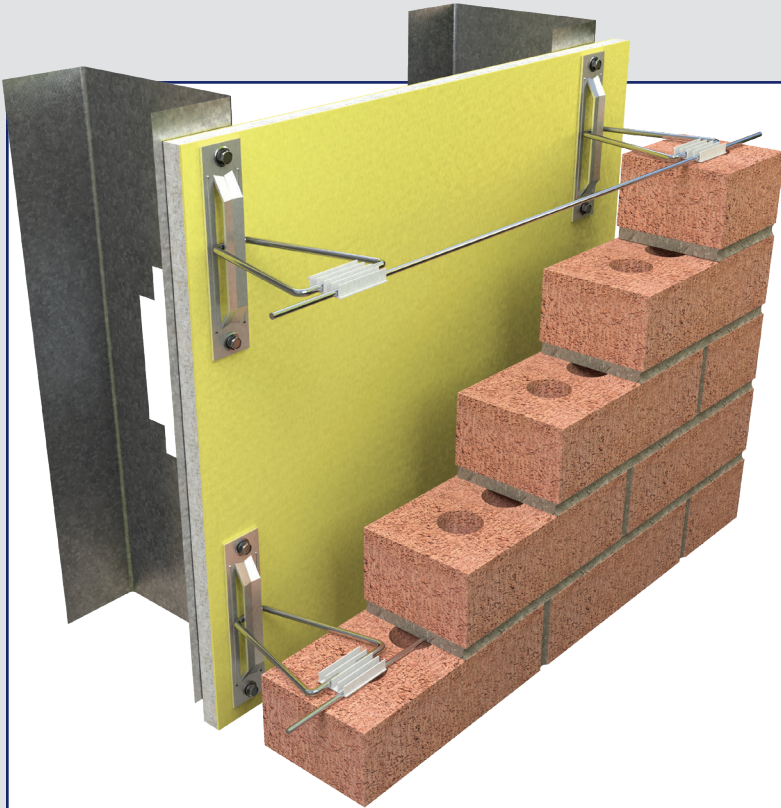


Barrel Anchor - Metal Stud (Welded Clip)

The Barrel Anchor - Seismic is used for anchoring brick to metal stud with continuous seismic wire & welded clip.

- Seismic wire available in 3/16" and 9 gauge
- Accommodates insulation thicknesses from 0" to 4 1/2" - specify thickness when ordering
- 16" O.C. recommended spacing
- Hot dip galvanized
- Wire Tie diameter 3/16"
- Available Wire Tie lengths: 3", 4", 5", 6", 7"

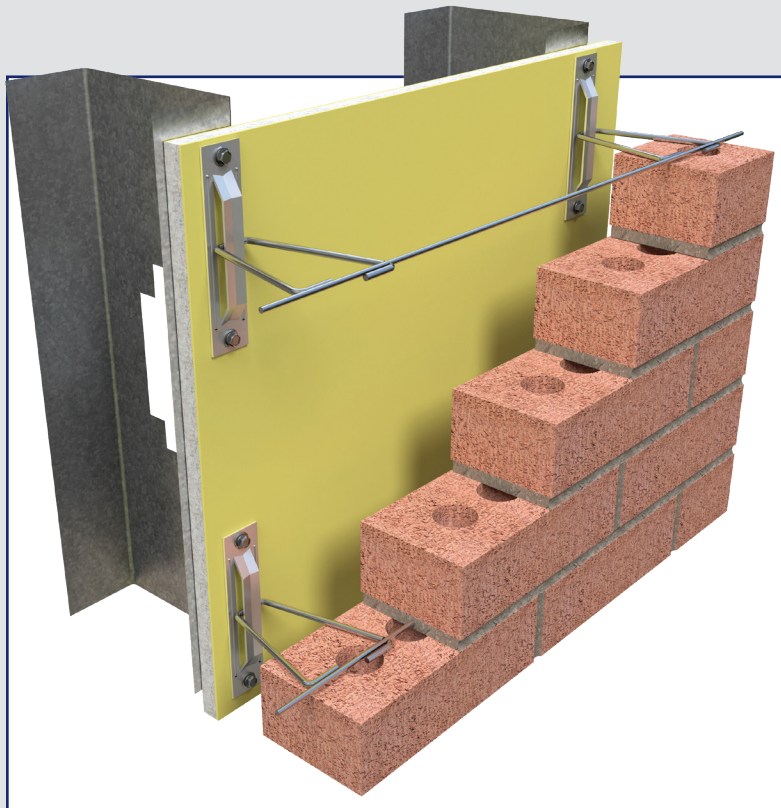
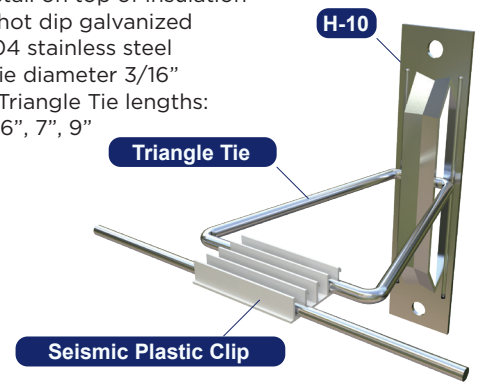




H-10 (Plastic Clip)

The H-10 veneer anchor is used for anchoring brick to metal stud, wood stud, concrete block or poured concrete with continuous wire & clip.

- Seismic wire available in 3/16" and 9 gauge
- Available in 14 and 12 gauge thickness
- 16" O.C. recommended spacing
- Do not install on top of insulation
- Available hot dip galvanized or type 304 stainless steel
- Triangle Tie diameter 3/16"
- Available Triangle Tie lengths: 3", 4", 5", 6", 7", 9"



H-10 (Seismic Triangle)

The H-10 veneer anchor is used for anchoring brick to metal stud, wood stud, concrete block or poured concrete with continuous seismic wire & swaged seismic triangle

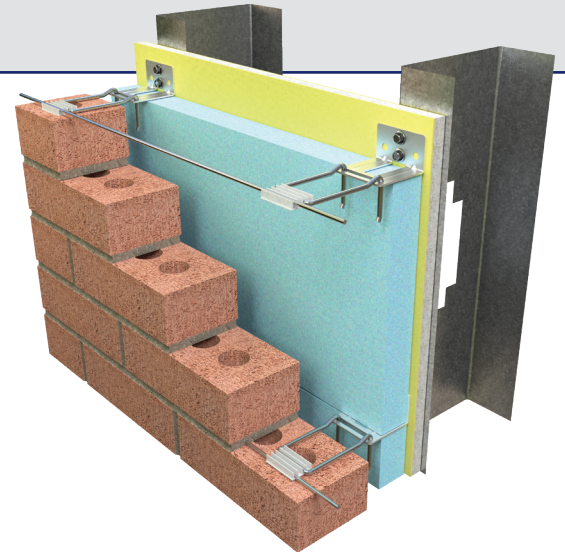
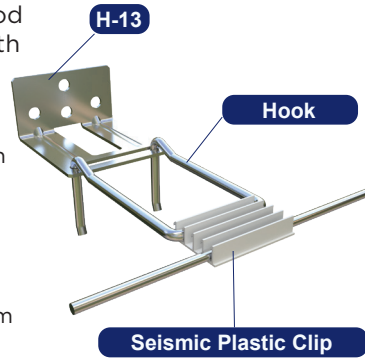
- Available in 14 and 12 gauge thickness
- 16" O.C. recommended spacing
- Do not install on top of insulation
- Available hot dip galvanized or type 304 stainless steel
- Triangle Tie diameter 3/16"
- Available Triangle Tie lengths: 3", 4", 5", 6", 7", 9"



H-13 (Plastic Clip)

Used for anchoring brick to metal stud, wood stud, concrete block or poured concrete with continuous seismic wire & clip.

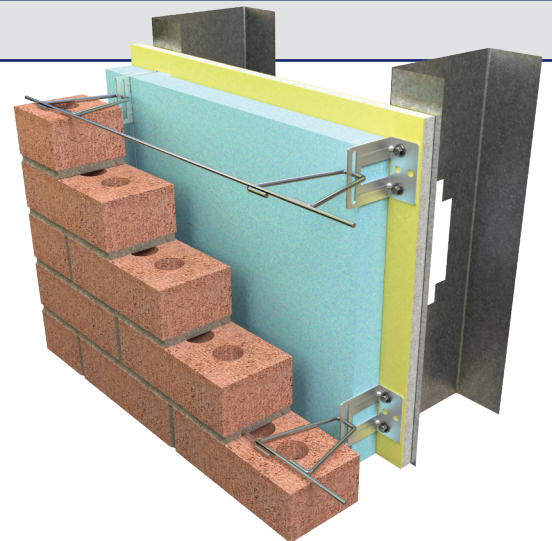
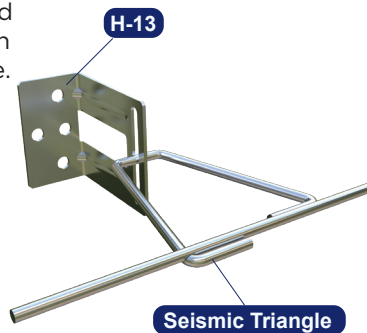
- Seismic wire available in 3/16" and 9 gauge
- Can be used with rigid or spray foam insulation
- 16" O.C. spacing recommended
- Available hot dip galvanized or type 304 stainless steel
- H-13 material thickness 14 gauge
- Hook & Triangle diameter 3/16"
- H-13 accommodates insulation thicknesses from 0" to 4 1/2" - specify thickness when ordering
- Available Hook lengths: 3", 4", 5", 6", 7"



H-13 (Seismic Triangle)

Used for anchoring brick to metal stud, wood stud, concrete block or poured concrete with continuous wire and swaged seismic triangle.

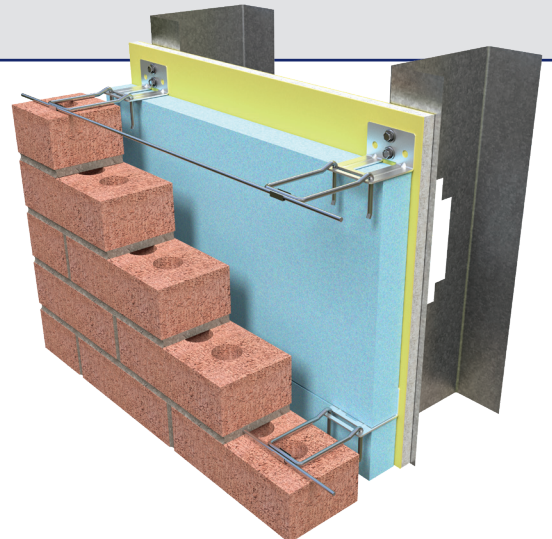
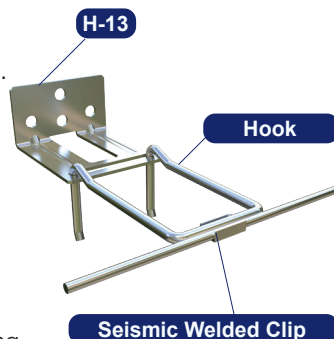
- Seismic wire available in 3/16" and 9 gauge
- Can be used with rigid or spray foam insulation
- 16" O.C. spacing recommended
- Available hot dip galvanized or type 304 stainless steel
- H-13 material thickness 14 gauge
- Hook & Triangle diameter 3/16"
- H-13 accommodates insulation thicknesses from 0" to 4 1/2" - specify when ordering
- Available Triangle Tie lengths: 3", 4", 5", 6", 7", 9"

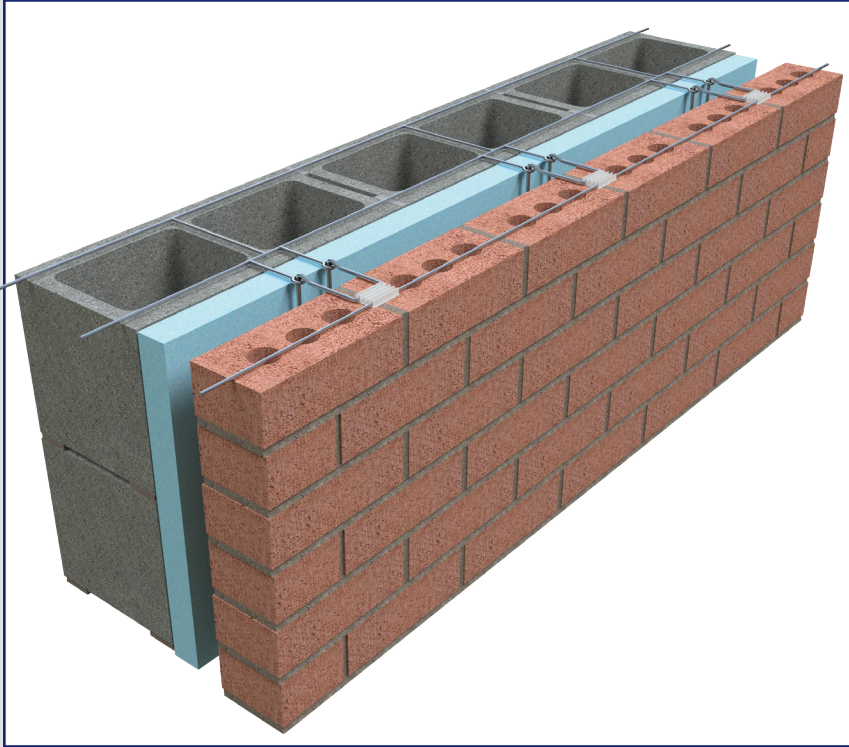


H-13 (Welded Clip)

Used for anchoring brick to metal stud, wood stud, concrete block or poured concrete with continuous seismic wire & welded seismic clip.

- Seismic wire available in 3/16" and 9 gauge
- Can be used with rigid or spray foam insulation
- 16" O.C. spacing recommended
- Available hot dip galvanized or type 304 stainless steel
- H-13 material thickness 14 gauge
- Hook & Triangle diameter 3/16"
- H-13 accommodates insulation thicknesses from 0" to 4 1/2" - specify thickness when ordering
- Available Hook lengths: 3", 4", 5", 6", 7"

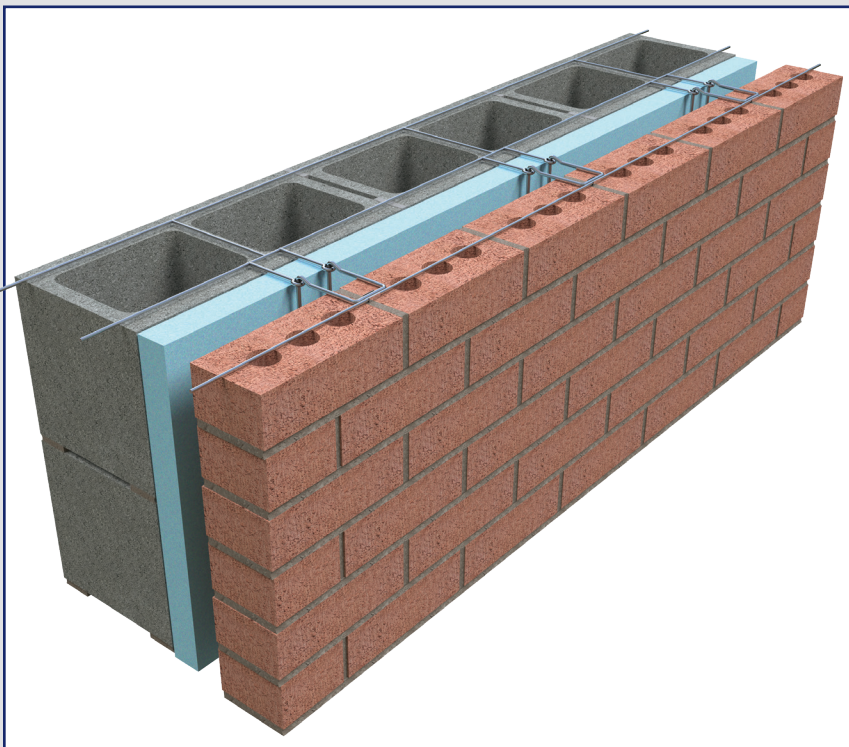
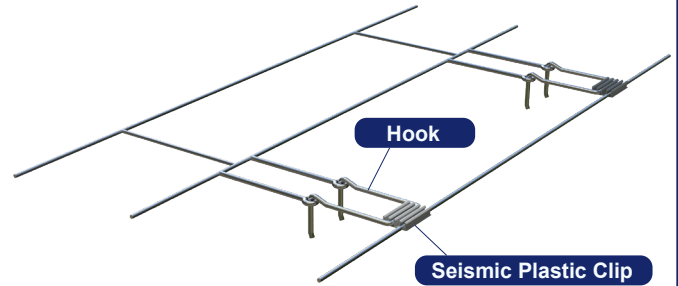




Ladder Eye (Plastic Clip)

Designed for embedment in the horizontal mortar joints of concrete masonry units.

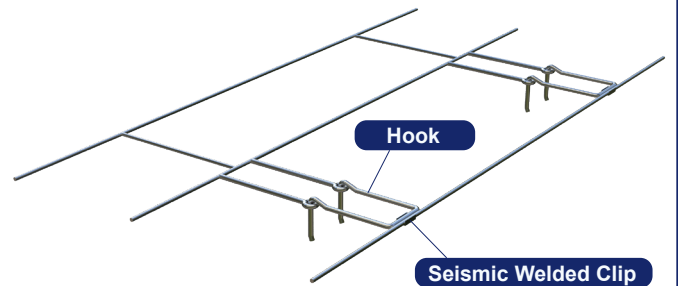
- Cross rods welded 16" O.C.
- 10 ft. long pieces
- Hot dip galvanized
- Available in standard, heavy duty, and extra heavy duty wire diameters
- Available for 4", 6", 8", 10", 12", 14", and 16" CMU
- Available for insulation thicknesses up to 4"
- Available Hook lengths: 3", 4", 5", 6", 7"



Ladder Eye (Welded Clip)

Designed for embedment in the horizontal mortar joints of concrete masonry units.

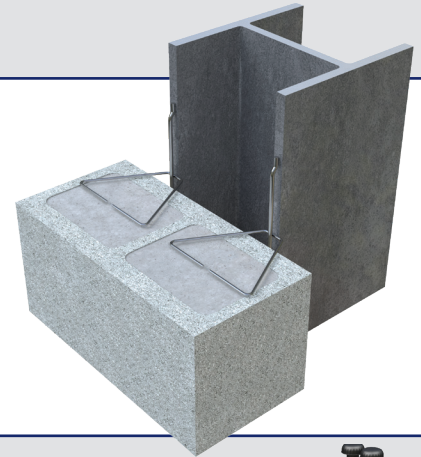
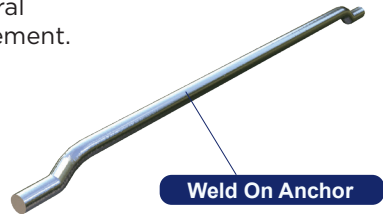
- Cross rods welded 16" O.C.
- 10 ft. long pieces
- Hot dip galvanized
- Available in standard, heavy duty, and extra heavy duty wire diameters
- Available for 4", 6", 8", 10", 12", 14", and 16" CMU
- Available for insulation thicknesses up to 4"
- Available Hook lengths: 3", 4", 5", 6", 7"



Column Weld On Anchor

Designed to anchor masonry to structural framing while allowing differential movement.

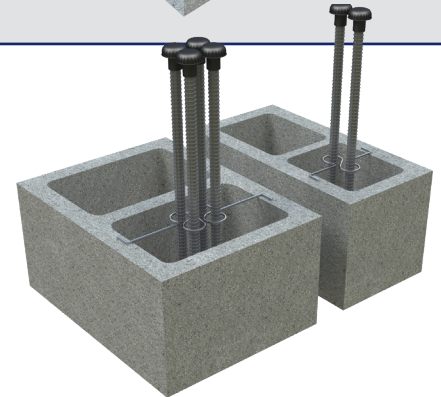
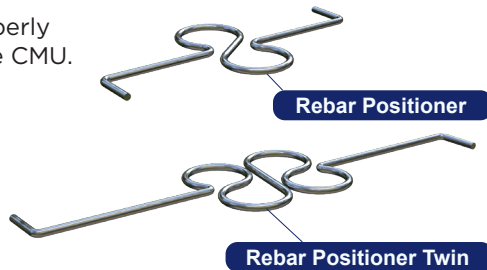
- 1/4" diameter
- Available plain, mill galvanized, or hot dip galvanized



Rebar Positioners

Rebar Positioners are used to properly locate the rebar in the cores of the CMU.

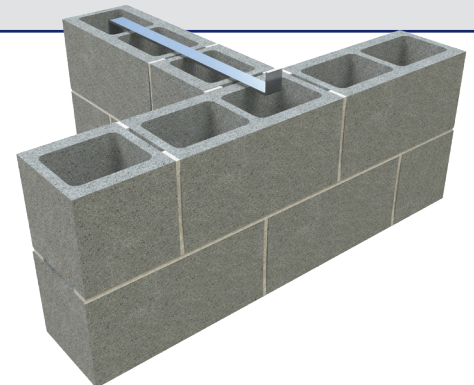
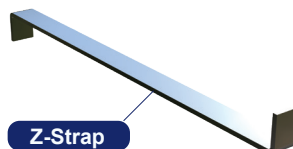
- Hot dip galvanized
- Rebar Positioner available for 6", 8", 10", and 12" CMU
- Rebar Twin Positioner available for 6", 8", 10", and 12" CMU



Z-Strap

The Z-Strap is designed for securing load-bearing walls at intersection points.

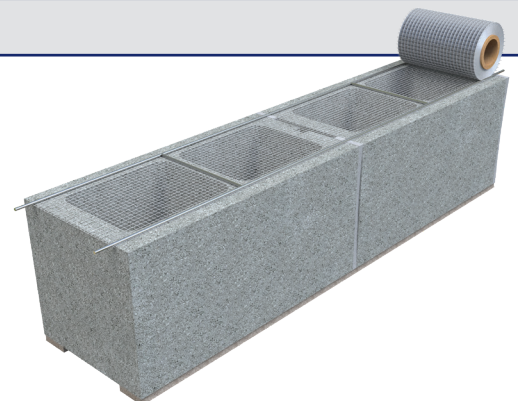
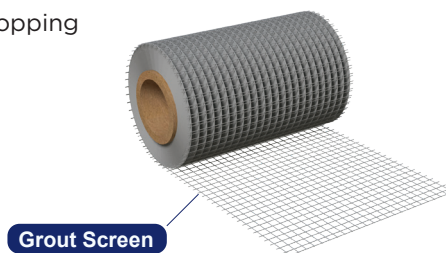
- Hot dip galvanized
- Thickness: 1/4"
- 1 1/2" x 24" with 2" bends

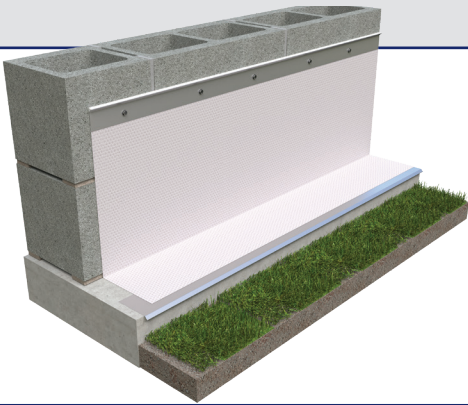


Grout Screen

Grout Screen prevents grout from dropping into CMU cores.

- Available for 6", 8", 10", and 12" CMU

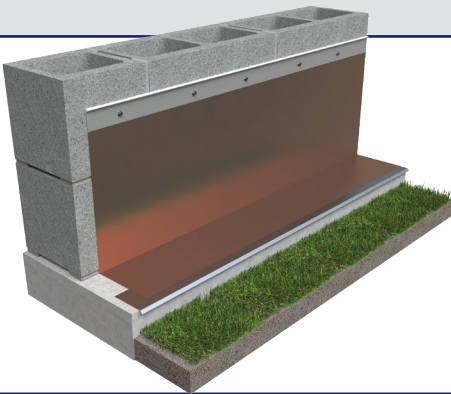
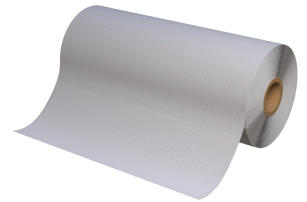




GENFLASH™ Flashing

A 40-mil thick composite membrane with a custom clear adhesive. It is a flexible membrane perfect for various surfaces.

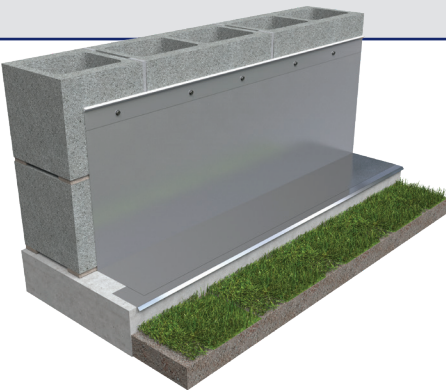
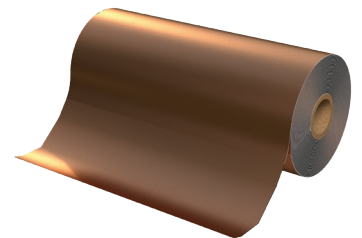
- Available widths: 4", 6", 9", 12", 16", 18", 24", 36"
- Requires the use of termination bar and drip edge
- Will not drool at high temperatures
- UV resistant up to 120 days
- No primer needed, No Voc's, HFCC's or CFC's



GENFLASH™ Copper / GENFLASH™ Copper SA

Copper fabric flashing (non-asphaltic) consisting of a single, solid sheet of copper bonded on both sides to layers of polymeric fabric or available as self-adhering with an adhesive backer with siliconized release liner.

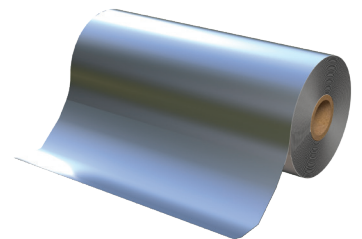
- Available widths: 12", 18", 24", 36"
- Requires the use of termination bar
- High puncture resistance



GENFLASH™ S.S. / GENFLASH™ S.S. SA

A stainless steel fabric flashing, categorized as Class A material, comprising a layer of polymeric fabric bonded with a single sheet of 304 stainless steel on one side

- Available widths: 12", 18", 24", 36"
- Requires the use of termination bar
- Available with adhesive backer and release liner



GENFLASH™ Sealant



An industrial & construction hybrid sealant and adhesive.

- Will not shrink or crack
- Cures to a long-term durable rubber
- Offers excellent resistance to UV degradation and yellowing for long-term performance
- Compatible with all 3GEN products
- 1 quart tube

GENFLASH™ Primer



A low viscosity, water-based formula designed to provide a tenacious bond.

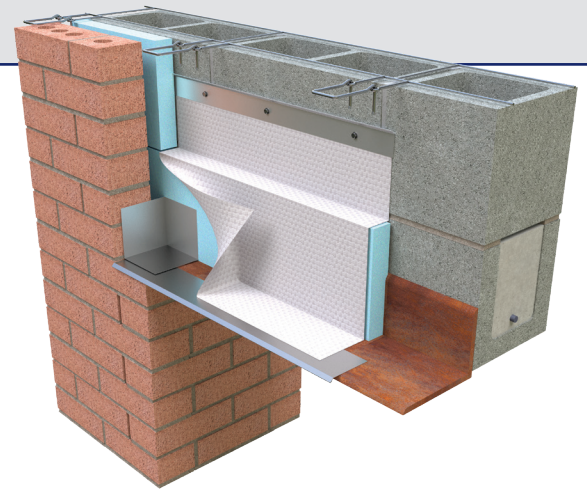
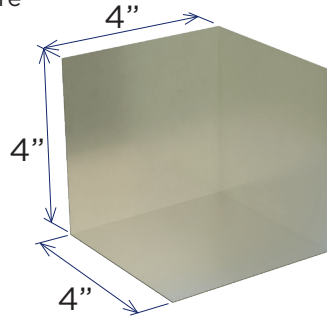
- Short dry time
- Remains flexible when cured
- Compatible with all 3GEN products
- 5 gallon pail

Flashing End Dam

Prefabricated Stainless Steel End Dams are soldered to ensure durable protection at horizontal flashing terminations.

They are designed to integrate with all 3GEN flashings.

- Type 304 stainless steel
- 26 gauge thickness

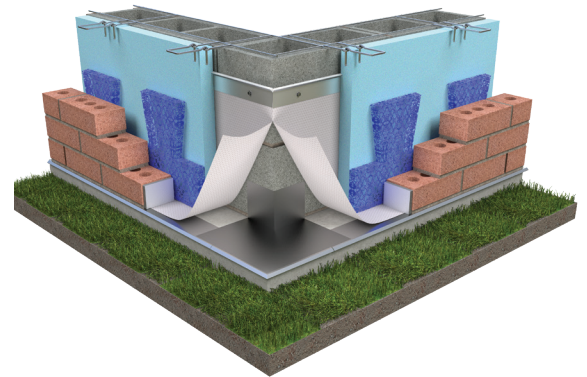
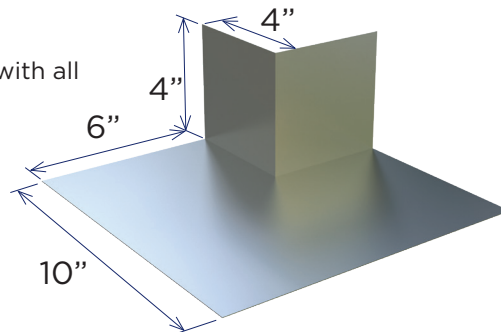


Flashing Outside Corner

Prefabricated Stainless Steel Corners are soldered to ensure durable protection at outside corner flashing details.

They are designed to integrate with all 3GEN flashings.

- Type 304 stainless steel
- 26 gauge thickness

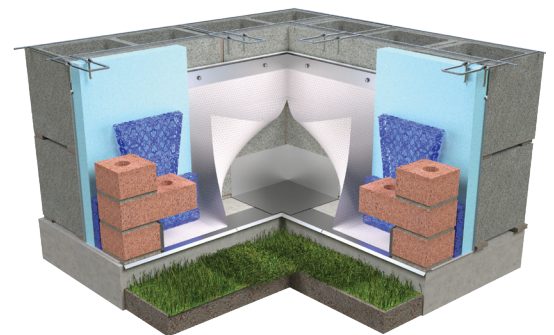
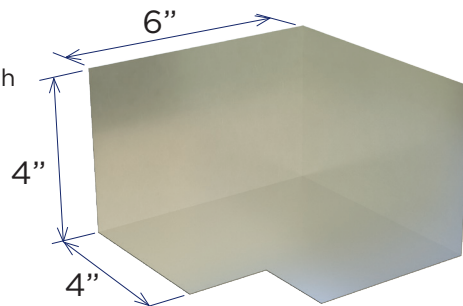


Flashing Inside Corner

Prefabricated Stainless Steel Corners are soldered to ensure durable protection at inside corner flashing details.

They are designed to integrate with all 3GEN flashings.

- Type 304 stainless steel
- 26 gauge thickness



Termination Bars

The termination bar is used to ensure that the flashing system is properly sealed, directing water away from the structure and preventing water infiltration.

- Available in type 304 stainless steel & aluminum

Type F Type L

Mortar ClearTM

Mortar ClearTM is a dovetail drainage mesh to manage mortar droppings in masonry cavity walls and is designed to suspend mortar droppings above the flashing and weeps, keeping them clear and unobstructed.

Cell Vents

The 3GEN Cell Vent is designed to ensure proper drainage and air flow in the cavity wall.

Available in almond, black, buff, cocoa, clear & gray colors

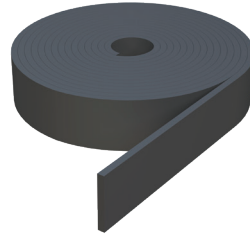
Drip Edges

Our Drip edge is used under flashing products to help aid in channeling moisture out of the cavity wall.

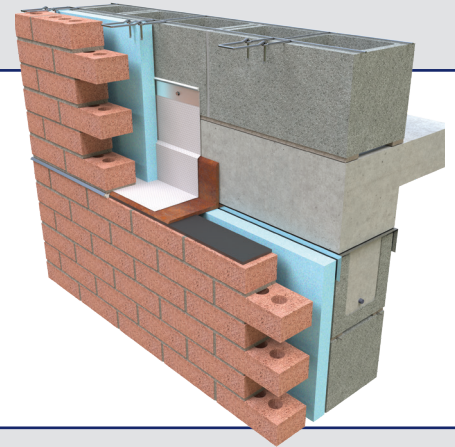
Drip Edge Inside Corner Outside Corner

Neoprene Expansion Joint

Closed-cell Neoprene is durable and water-resistant. It can handle up to 50% compression, and is manufactured to meet ASTM D 1056, RE41 Grade 2A1.

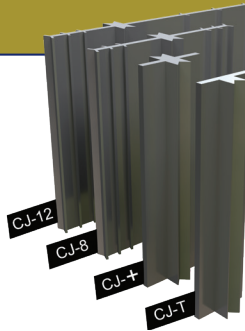


- 3/8" x 3" x 50' long

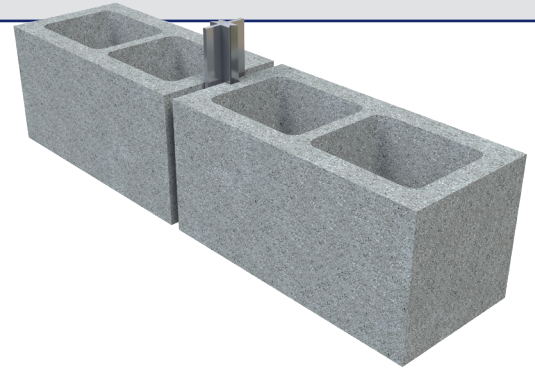


Control Joints

Essential for concrete walls, control joints help manage and minimize the effects of shrinkage, temperature changes, and other stresses that can cause cracking.

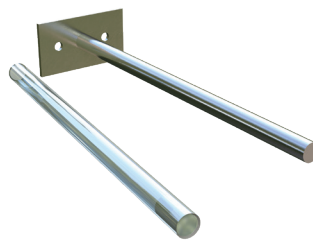


- 4 available types
- Available in PVC or Rubber
- 48" long pieces



Partition Top Anchor (PTA)

Provides lateral shear resistance at top of slab for masonry walls. Allows vertical slab movement without transferring compressive loads.

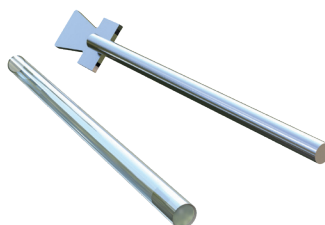


- 3/8" x 7" rod with tube and filler
- Hot dip galvanized



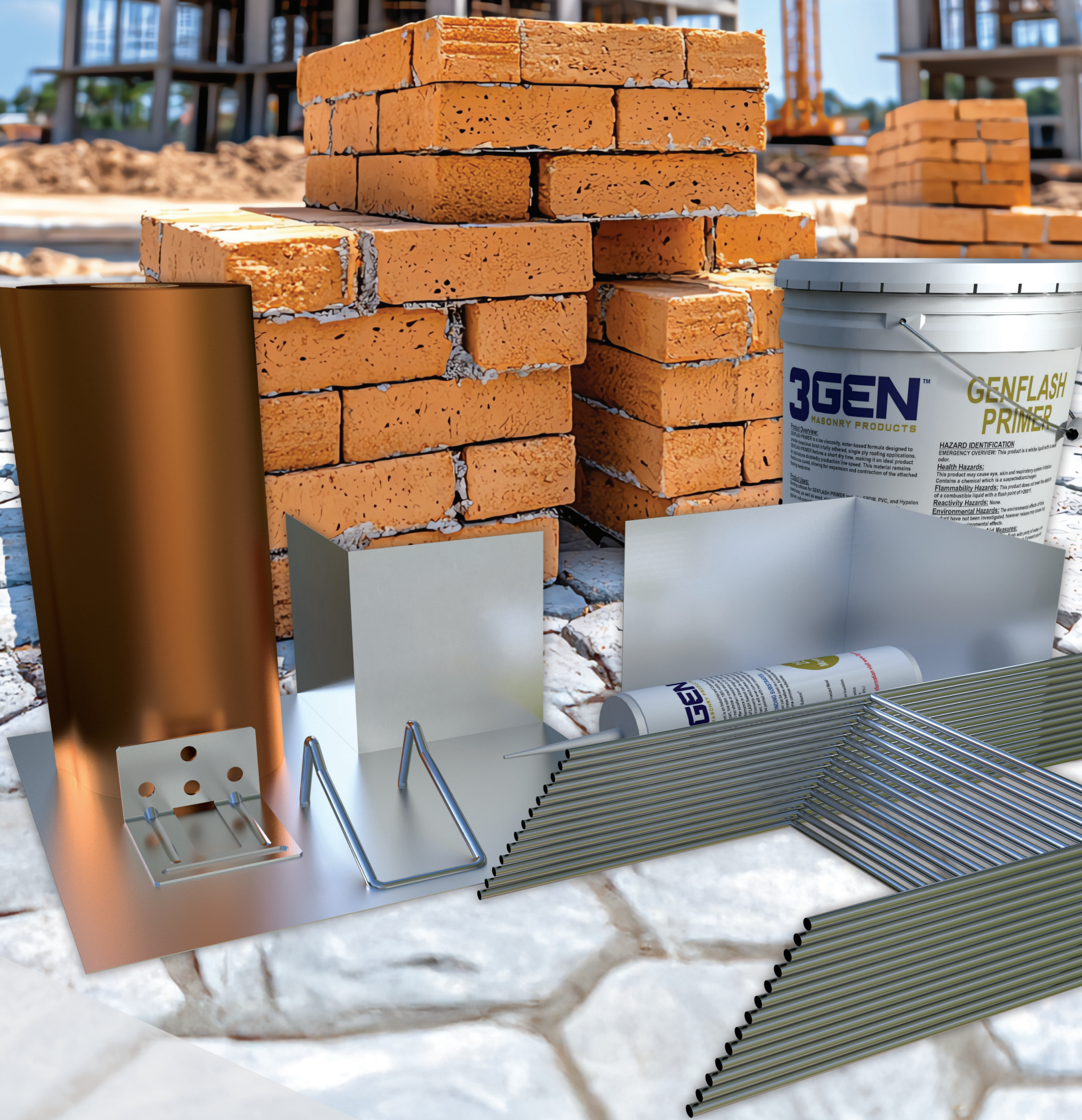
Partition Top Anchor - DT

Provides lateral shear resistance at top of slab for masonry walls. Allows vertical slab movement without transferring compressive loads.



- For use in dovetail slot
- 3/8" x 7" rod with tube and filler
- Hot dip galvanized





3GENTM

MASONRY PRODUCTS

THE LEADER IN MASONRY SOLUTIONS

Warehouse Address : 3GEN Masonry Products, Inc. 8550 Parkway Drive Leeds, AL 35094
1-800-556-5785 www.3genmp.com LinkedIn : @3GENMasonryProducts