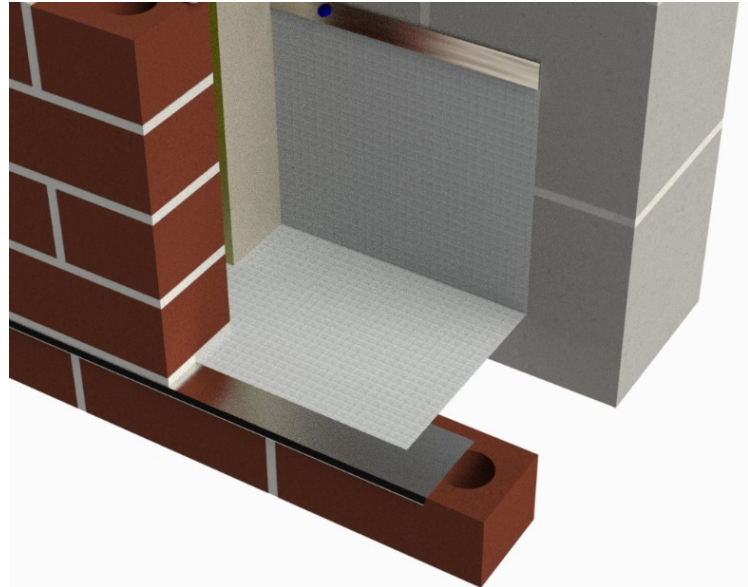
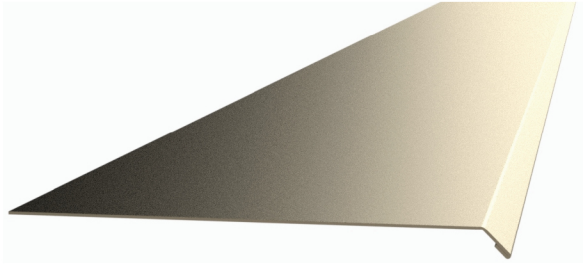




PRODUCT SUBMITTAL - DRIP EDGE

Drip Edge is used under flashing products to help aid in channeling moisture out of the cavity wall.



Recycled Content:

Stainless Steel (Type 304)
68% Post-Consumer
18% Post-Industrial

Material Conformance

Drip Edge is used under flashing products to help aid in channeling moisture out of the cavity wall.

Drip Edge and Drip edge Corners are designed with a (3/8") 45 Degree Hemmed Edge.

Stainless Steel: Type 304 ASTM A240 / A240M, ASTM A480 / A480M & ASTM A666. (2B/2D Finish)

Product Details

Drip Edge Size: 26 gauge x 8ft long.
Drip Edge Finish: Stainless Steel (Type 304)
Drip Edge Corners 3" Wide x 8" x 8" long sections.

Drip Edge Width:

- 1 1/2"
- 3"

RESET EMAIL PRINT

NOTE

The information contained on this submittal sheet does not constitute any professional opinion or judgement and should not be used as a substitute for any architect or engineer professional determinations. Each construction project is unique and the use of these products is the responsibility of the architects, engineers and other professionals who are familiar with the specific design of the project.

Mailing Address
8528 Davis Blvd., #134-246
North Richland Hills, TX 76182
Tel#: 1-800-556-5785

3genmp.com

Warehouse Address
8550 Parkway Drive
Leeds, AL 35094
Tel#: 1-800-556-5785